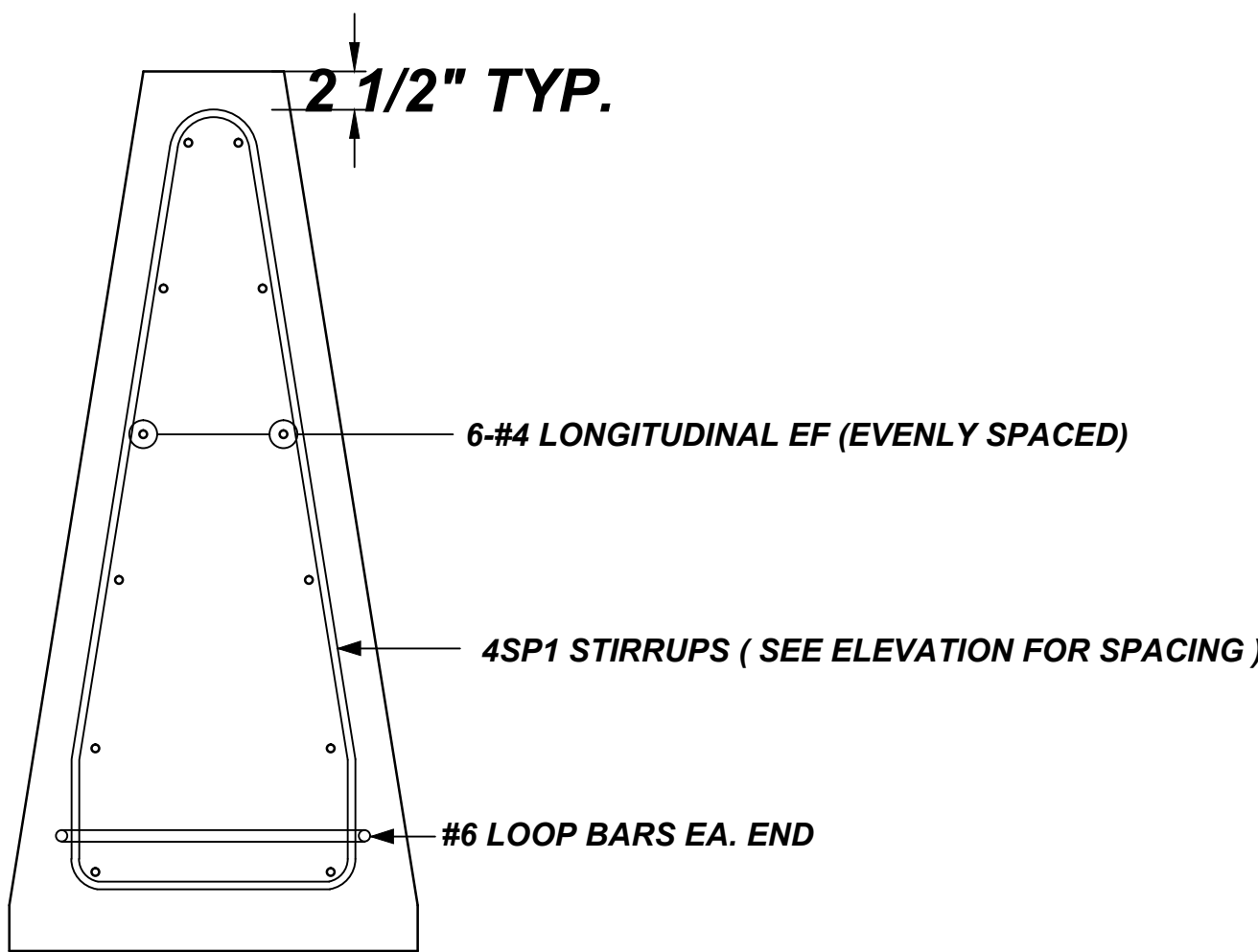
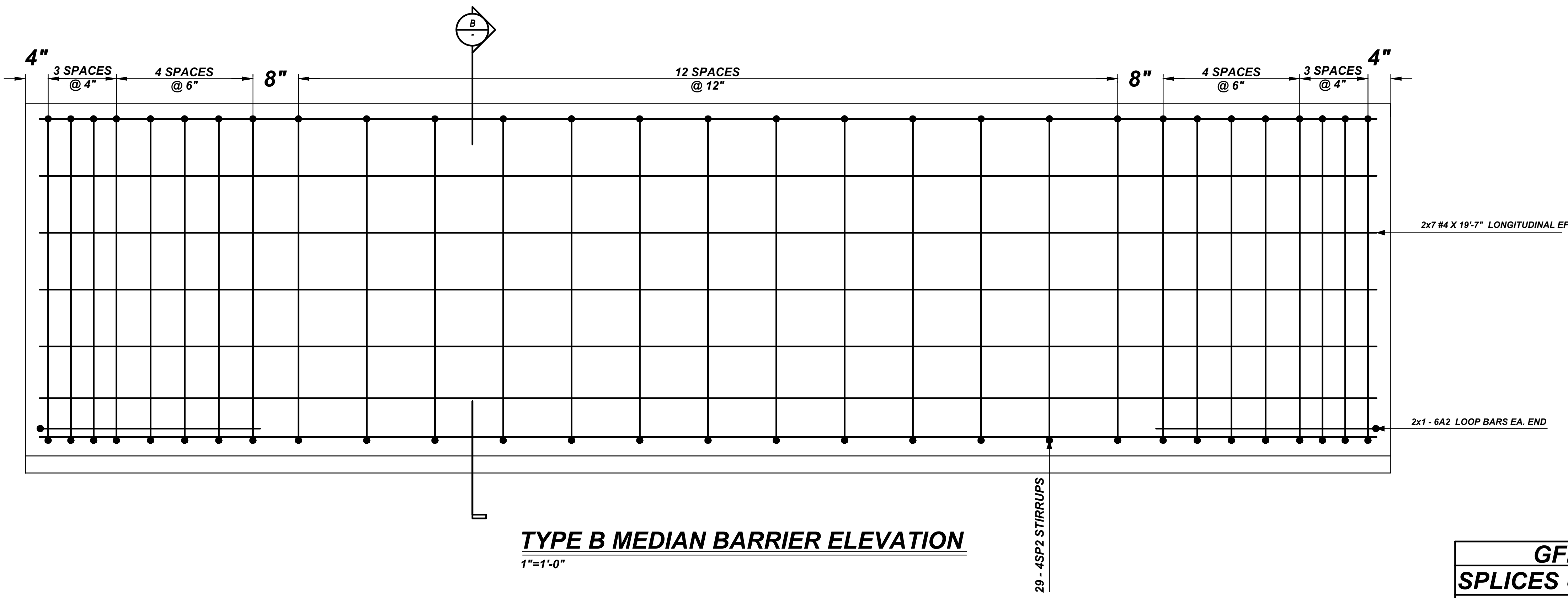


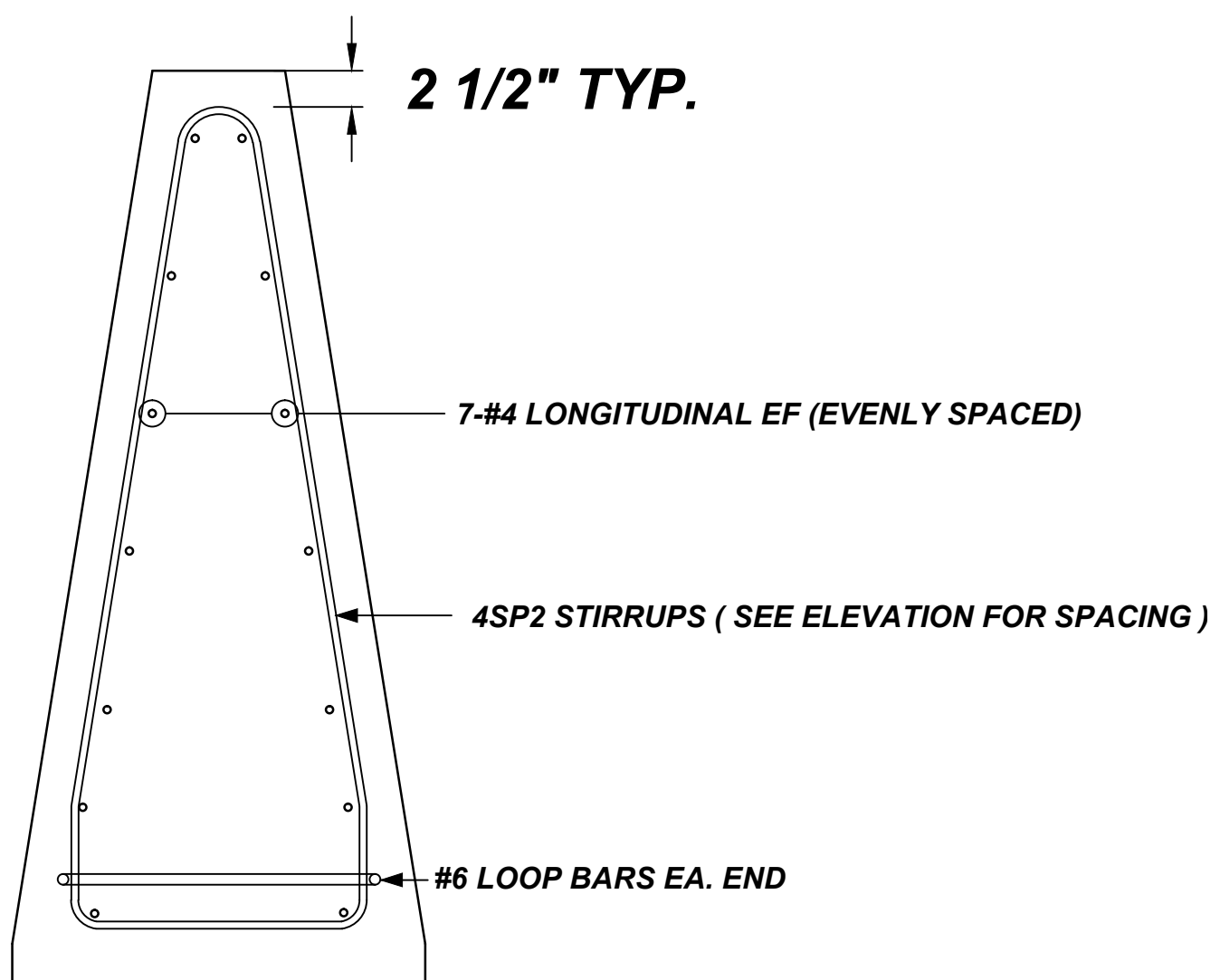
TYPE A MEDIAN BARRIER ELEVATION
1"=1'-0"



SECTION A
1"=1'-0"



TYPE B MEDIAN BARRIER ELEVATION
1"=1'-0"



SECTION B
1"=1'-0"

NOTICE
SHORTAGES, IMPROPER FABRICATION OR CLAIMS FOR ANY OTHER REASON MUST BE REPORTED TO THIS COMPANY WITHIN 10 DAYS FROM ORIGINAL DELIVERY. THIS COMPANY ALSO RESERVES THE RIGHT TO FIELD INSPECT MATERIALS PRIOR TO REPLACEMENT OR RECONDITIONING OF MATERIALS AND WILL NOT BE LIABLE FOR CHARGES FROM WORK DONE IN THE FIELD WITHOUT PRIOR AUTHORIZATION FROM THIS COMPANY.

REINFORCING STEEL PLACING DRAWING ONLY. USE IN CONJUNCTION WITH CONTRACT DRAWINGS & SPECIFICATIONS. ELEVATIONS & DIMENSIONS SHOWN ON DRAWING ARE FOR DETAILING PURPOSES ONLY AND SHOULD NOT BE USED FOR CONSTRUCTION UNLESS VERIFIED BY ENGINEER OR CONTRACTOR.

GFRP REINFORCEMENT					
SPICES USED		ABBREVIATIONS		BAR MARK SIZE EQUIVALENT	
N/A		ADD. = Additional		Imperial	Soft Metric
TOP BARS		B.O.W. = Bottom of wall		#3	#10
OTHER BARS		C.B. = Corner Bars		#4	#13
#3	_____	D.I.A.G. = Diagonal		#5	#16
#4	_____	D.O. = Door Opening		#6	#19
#5	_____	DWLS. = Dowels		#7	#22
#6	_____	E.F. = Each Face		#8	#25
#7	_____	E.S. = Each Side		#9	#29
#8	_____	E.W. = Each Way		#10	#32
#9	_____	F.T.G. = Footing		#11	#36
#10	_____	F.F. = Far Face			
#11	_____	HORIZ. = Horizontal			
#12	_____	I.F. = Inside Face			
#13	_____	INTER. = Intersection			
#14	_____	L.W. = Long Way			
		N.F. = Near Face			
		O.F. = Outside Face			
		S.W. = Short Way			
		T&B = Top & Bottom			
		T.O.W. = Top of Wall			
		Trans. = Transverse			
		VERT. = Vertical			
1	07/16/13	RECORD			
0	07/11/13	APPROVAL			
REV No.	DATE	SENT FOR	REV No.	DATE	SENT FOR



HARMAC

A Division of A.H. Harris & Sons, Inc.
Formerly MacFarlane Steel

P.O. Box 142
Cornshop Road
Fryeburg, ME 04037

Tel. 800-294-4702
Fax 207-935-3058

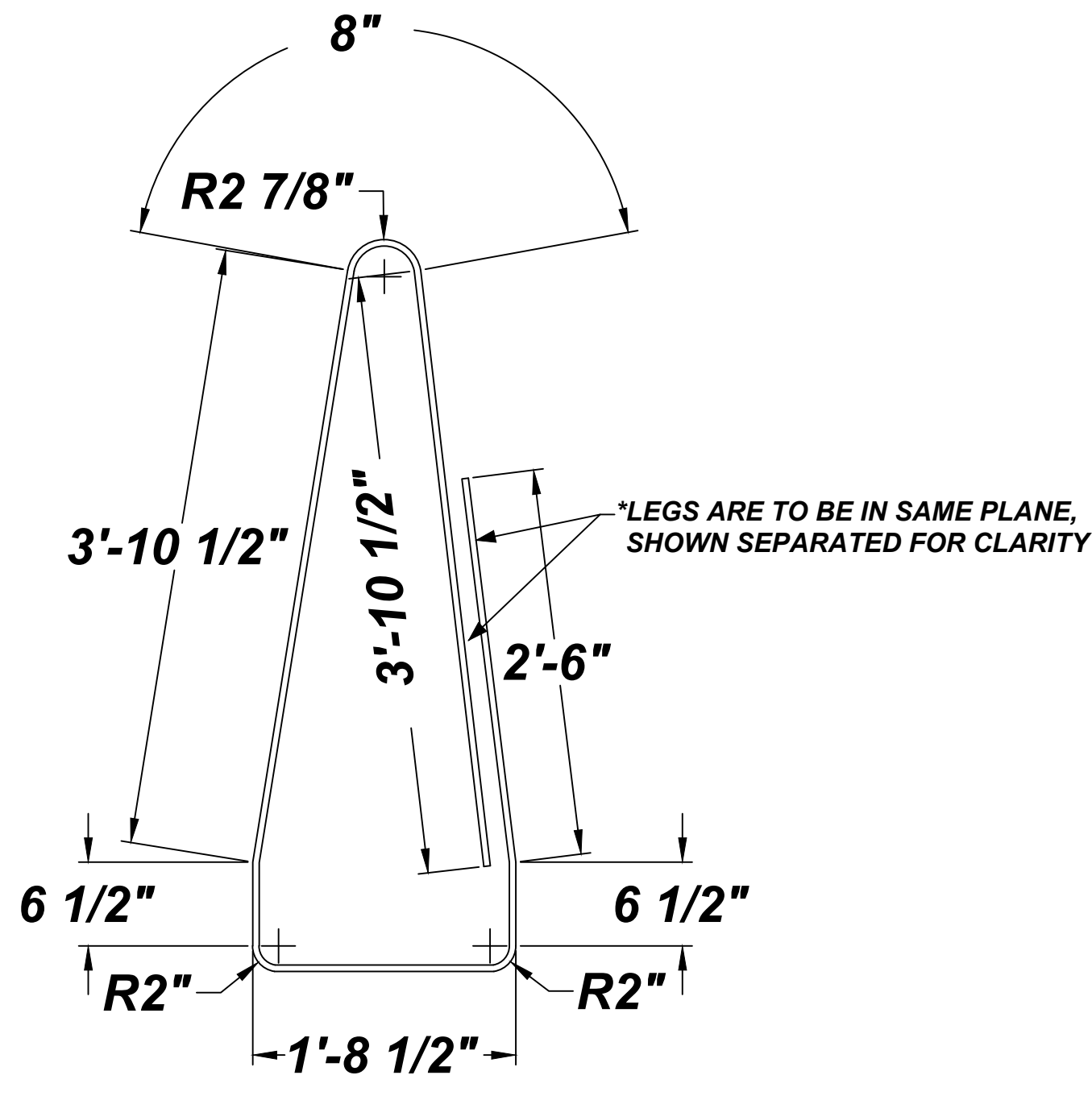
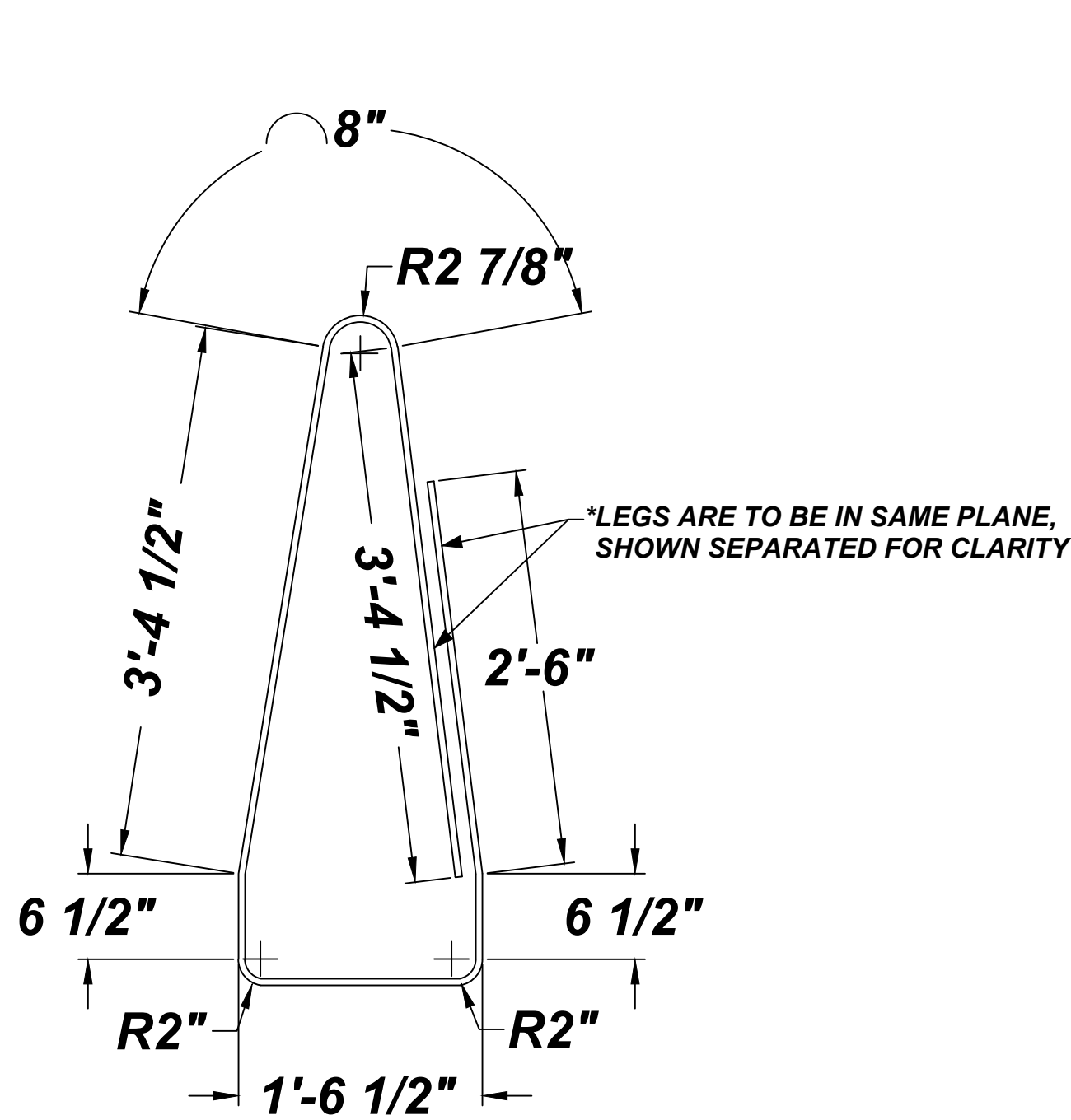
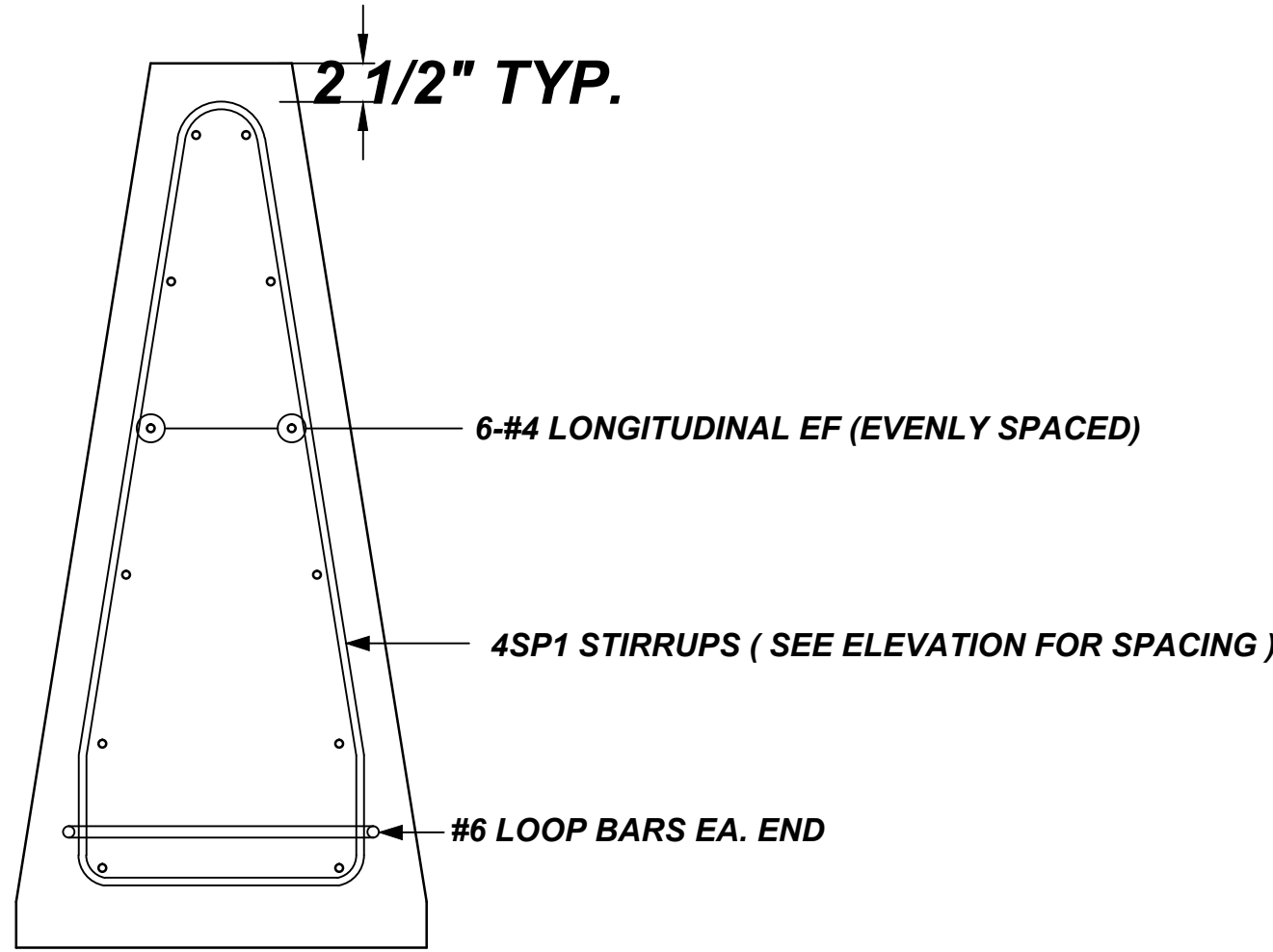
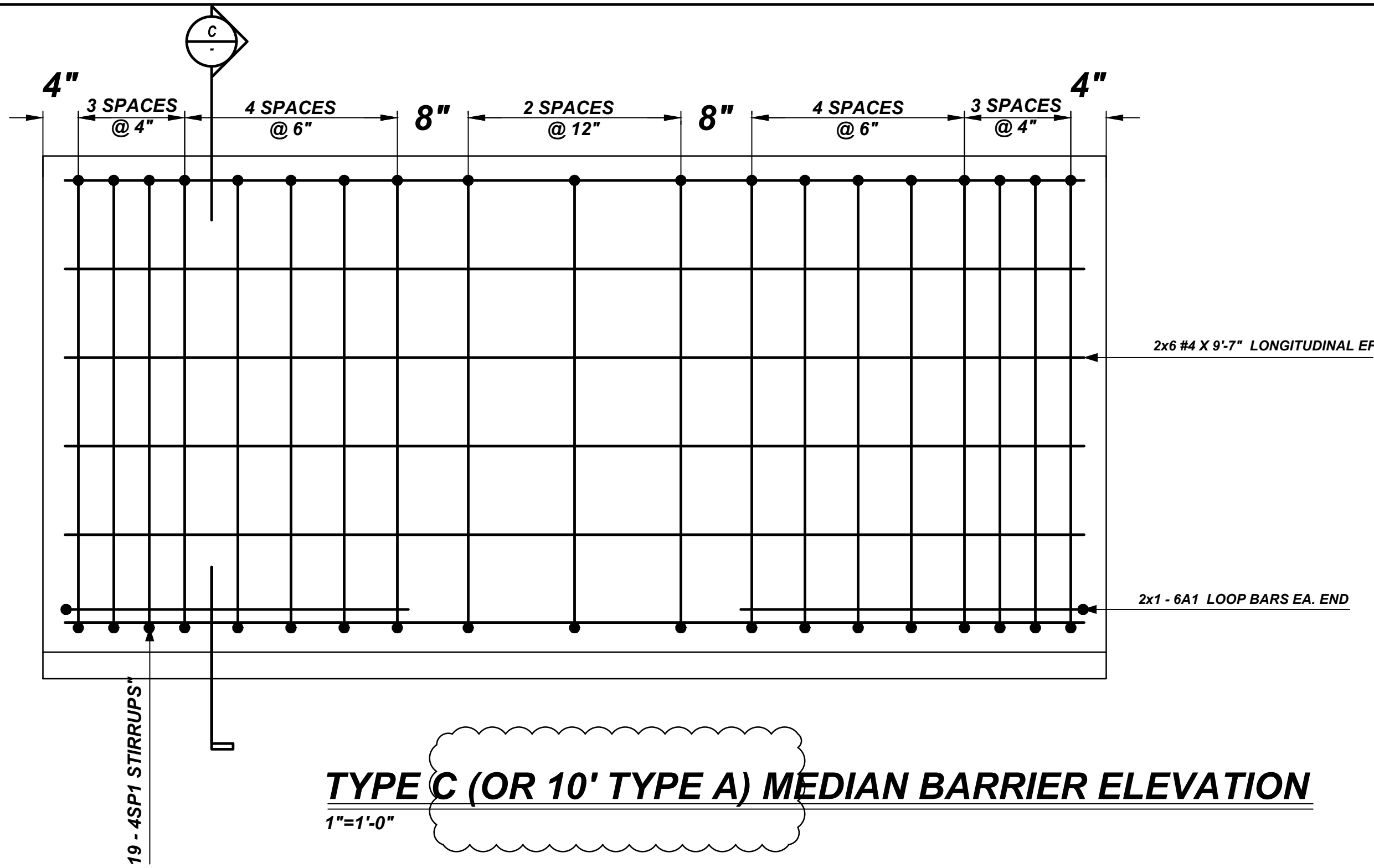
301 Hartle Street
Sayreville, NJ 03301

I-95 CONCRETE BARRIER
PRECAST MEDIAN BARRIERS TYPE A & B
BANGOR, MAINE

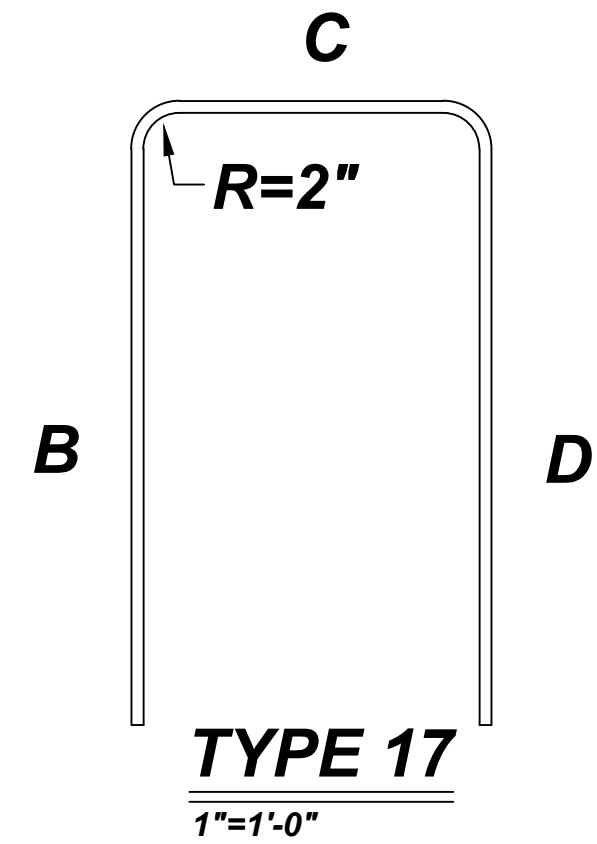
CUSTOMER: SARGENT MATERIALS

DESIGNER:

DRAWN BY	DATE	JOB NO	SHEET NO.
N.R.M.	07.11.13	M913N340	R-1



Release Number: MEDWN				BAR LIST															
Bar Mark	Qty	Size	Total Length	Type	X'	Y'	Z'	U'	V'	W'	X'	Y'	Z'	U'	V'	W'	X'	Y'	Z'
6A1		#6	8'-2 1/2"	17		3'-3"	1'-8 1/2"	3'-3"											
6A2		#6	8'-4 1/2"	17		3'-3"	1'-10 1/2"	3'-3"											



NOTICE

SHORTAGES, IMPROPER FABRICATION OR CLAIMS FOR ANY OTHER REASON MUST BE REPORTED TO THIS COMPANY WITHIN 10 DAYS FROM ORIGINAL DELIVERY. THIS COMPANY ALSO RESERVES THE RIGHT TO FIELD INSPECT MATERIALS PRIOR TO REPLACEMENT OR RECONDITIONING OF MATERIALS AND WILL NOT BE LIABLE FOR CHARGES FROM WORK DONE IN THE FIELD WITHOUT PRIOR AUTHORIZATION FROM THIS COMPANY.

REINFORCING STEEL PLACING DRAWING ONLY. USE IN CONJUNCTION WITH CONTRACT DRAWINGS & SPECIFICATIONS. ELEVATIONS & DIMENSIONS SHOWN ON DRAWING ARE FOR DETAILING PURPOSES ONLY AND SHOULD NOT BE USED FOR CONSTRUCTION UNLESS VERIFIED BY ENGINEER OR CONTRACTOR.

GFRP REINFORCEMENT									
SPICES USED				ABBREVIATIONS			BAR MARK SIZE EQUIVALENT		
N/A				ADD. = Additional			Imperial		
TOP BARS				B.O.W. = Bottom of wall			Soft Metric		
OTHER BARS				C.B. = Corner Bars			#3	#10	
#3	---	#3	---	D.I.A.G. = Diagonal			#4	#13	
#4	---	#4	---	D.O. = Door Opening			#5	#16	
#5	---	#5	---	DWLS. = Dowels			#6	#19	
#6	---	#6	30	E.F. = Each Face			#7	#22	
#7	---	#7	---	E.S. = Each Side			#8	#25	
#8	---	#8	---	E.W. = Each Way			#9	#29	
#9	---	#9	---	F.T.G. = Footing			#10	#32	
#10	---	#10	---	F.F. = Far Face			#11	#36	
#11	---	#11	---	HORIZ. = Horizontal					
#14	---	#14	---	I.F. = Inside Face					
				INTERSE = Intersection					
				L.W. = Long Way					
				N.F. = Near Face					
				O.F. = Outside Face					
				S.W. = Short Way					
				T&B = Top & Bottom					
				T.O.W. = Top of Wall					
				Trans. = Transverse					
				VERT. = Vertical					
1	07/16/13	RECORD							
0	07/11/13	APPROVAL							
REV No.	DATE	SENT FOR		REV No.	DATE	SENT FOR			

HARMAC

A Division of A.H. Harris & Sons, Inc.
Formerly MacFarlane Steel

P.O. Box 142
Cornshop Road
Fryeburg, ME 04037

301 Hartle Street
Sayreville, NJ 03301

Tel. 800-294-4702
Fax 207-935-3058

I-95 CONCRETE BARRIER

PRECAST MEDIAN BARRIERS TYPE C & BENDING DETAILS

BANGOR, MAINE

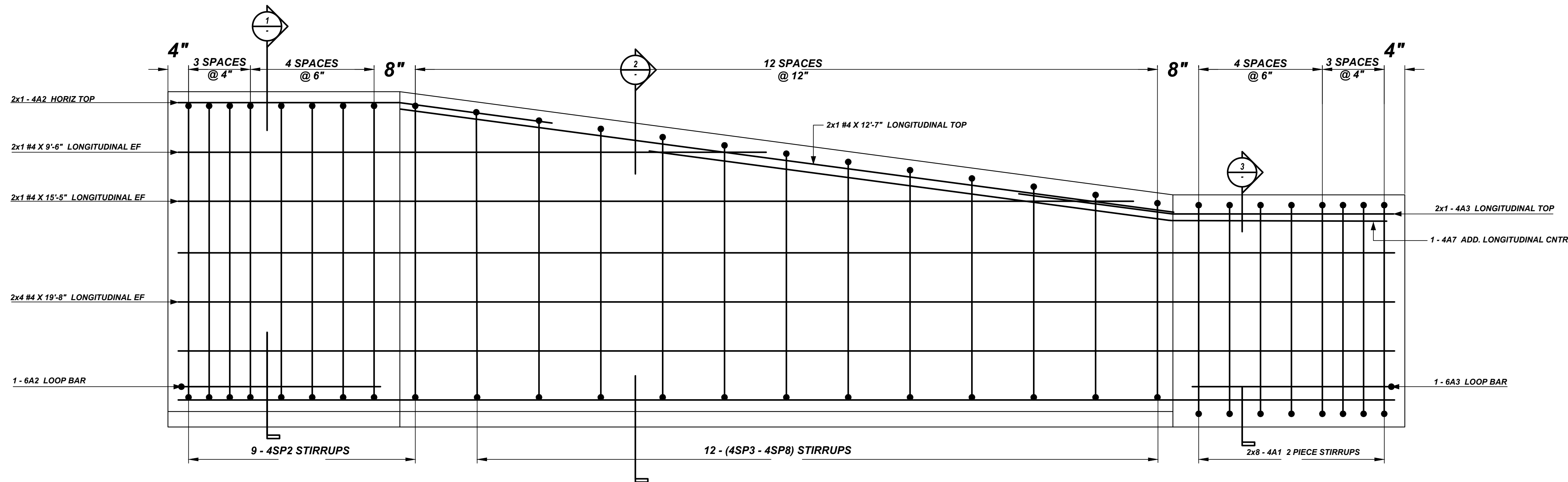
CUSTOMER: SARGENT MATERIALS

DESIGNER:

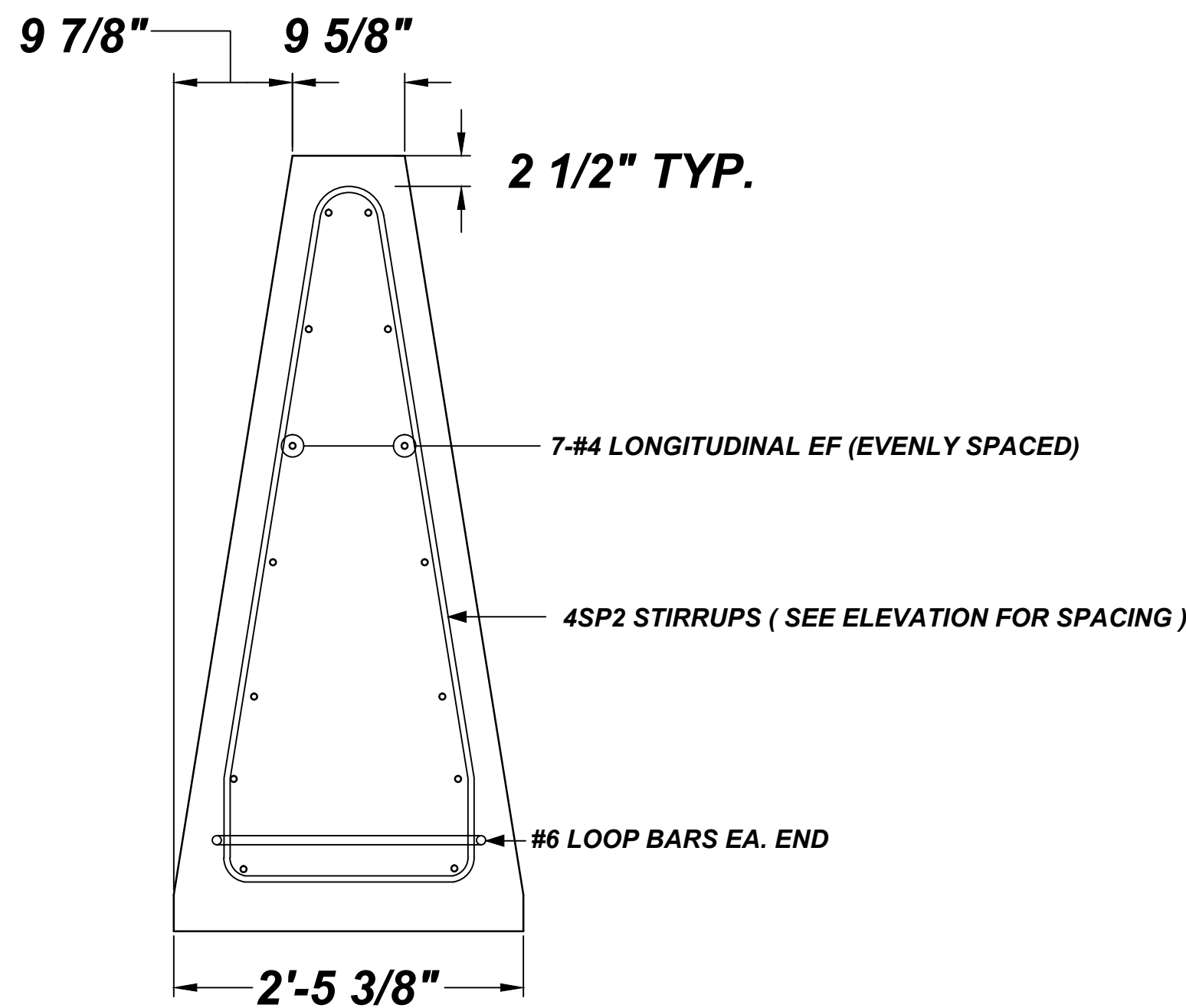
DRAWN BY: N.R.M. DATE: 07.11.13

JOB NO: M913N340

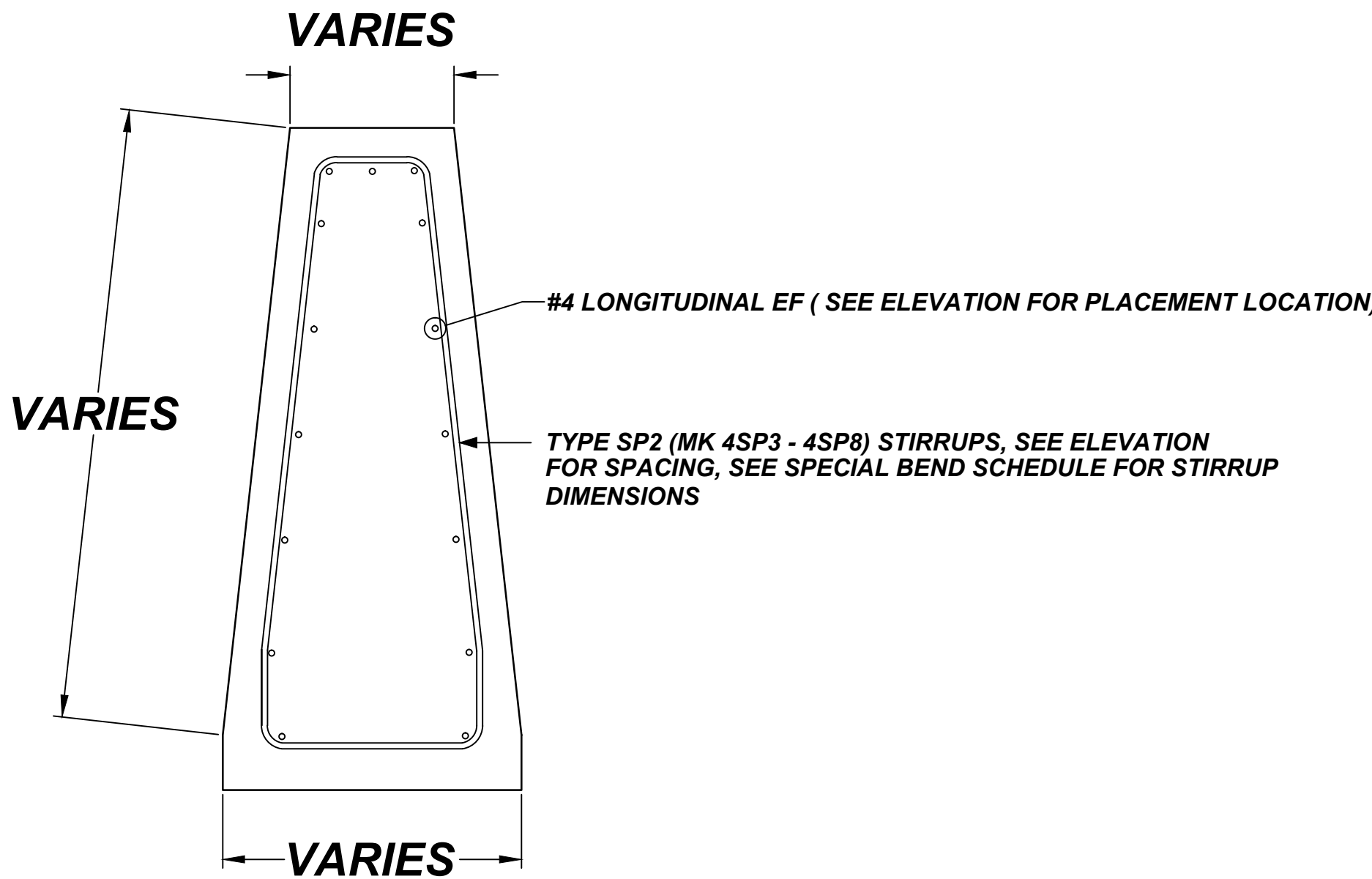
SHEET NO: R-1A



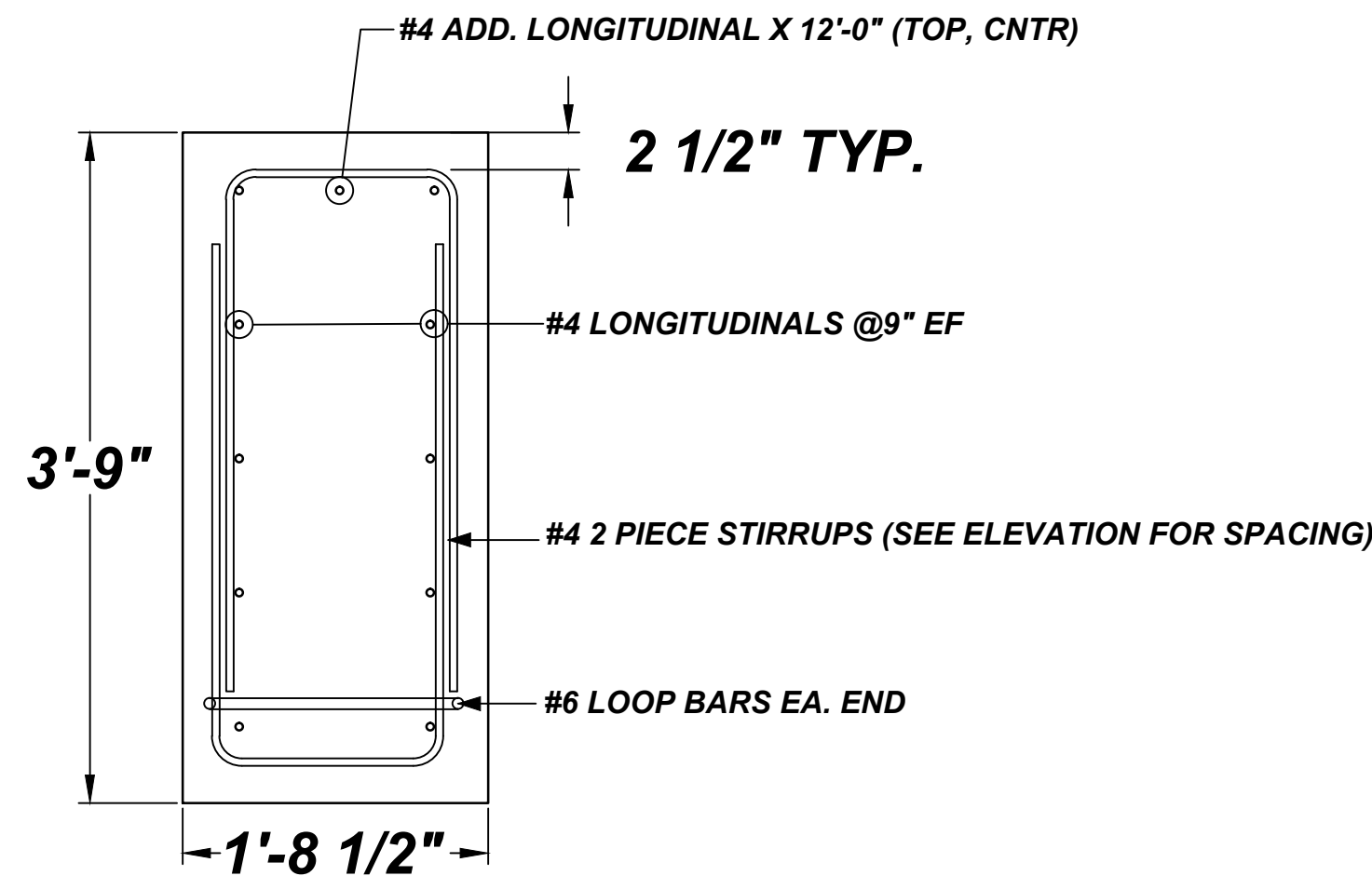
TYPE A TRANSITION BARRIER ELEVATION
1"=1'-0"



SECTION 1
1"=1'-0"



SECTION 2
1"=1'-0"

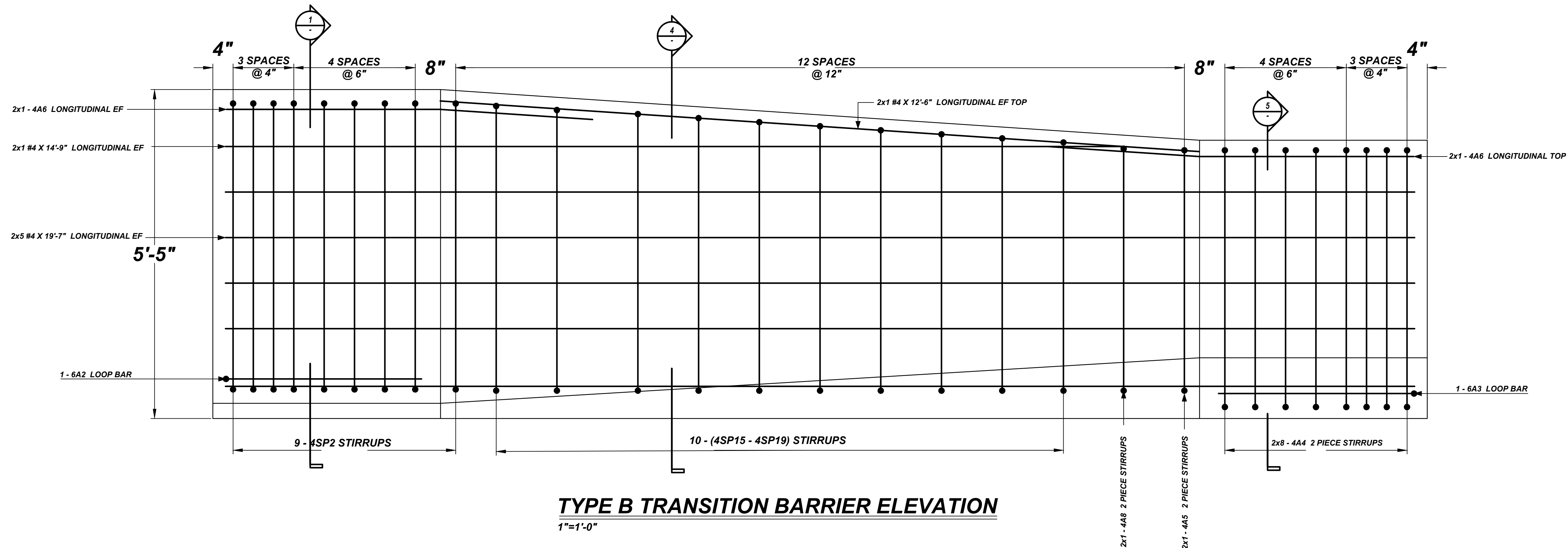


SECTION 3
1"=1'-0"

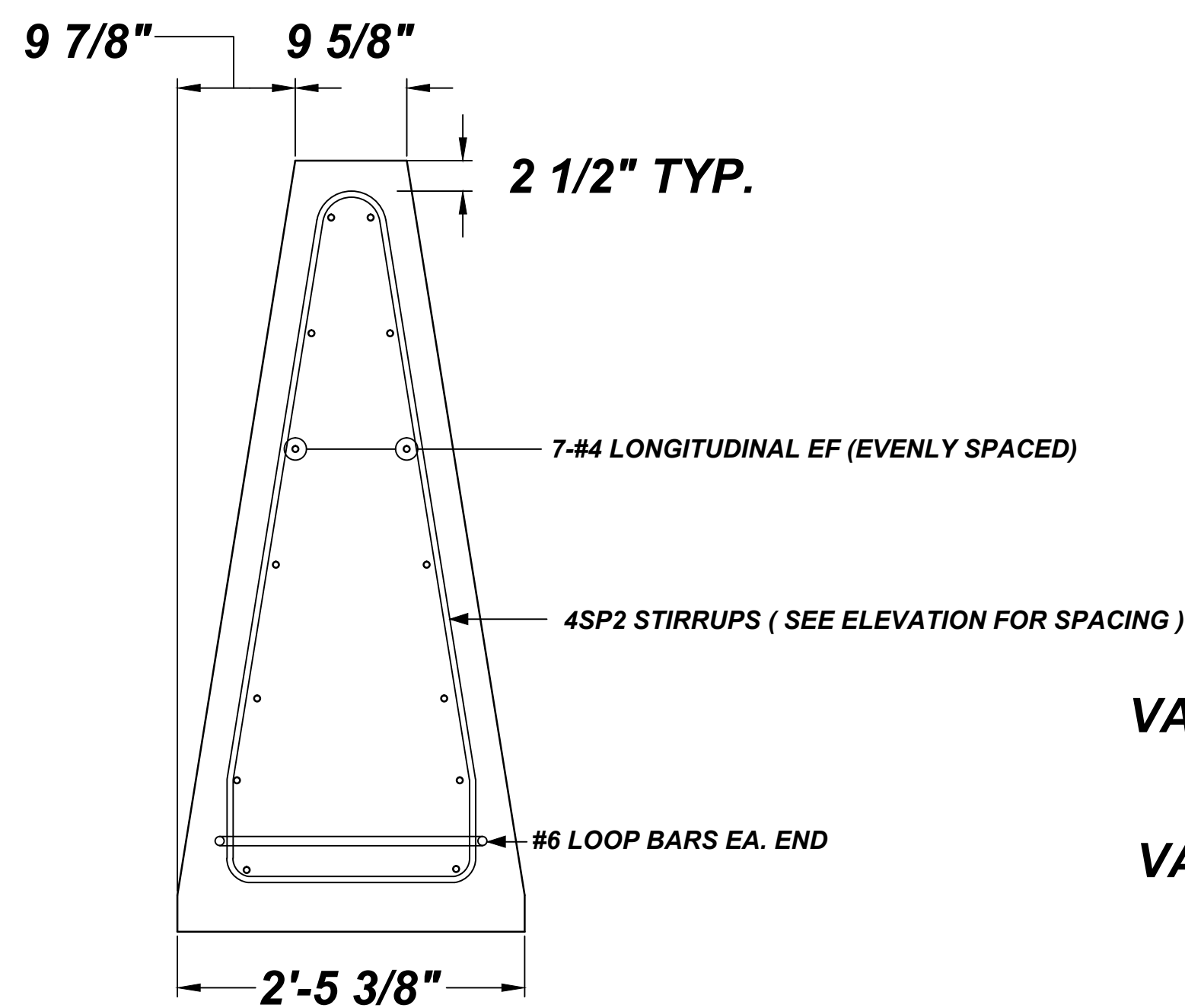
NOTICE
SHORTAGES, IMPROPER FABRICATION OR CLAIMS FOR ANY OTHER REASON MUST BE REPORTED TO THIS COMPANY WITHIN 10 DAYS FROM ORIGINAL DELIVERY. THIS COMPANY ALSO RESERVES THE RIGHT TO FIELD INSPECT MATERIALS PRIOR TO REPLACEMENT OR RECONDITIONING OF MATERIALS AND WILL NOT BE LIABLE FOR CHARGES FROM WORK DONE IN THE FIELD WITHOUT PRIOR AUTHORIZATION FROM THIS COMPANY.

REINFORCING STEEL PLACING DRAWING ONLY. USE IN CONJUNCTION WITH CONTRACT DRAWINGS & SPECIFICATIONS. ELEVATIONS & DIMENSIONS SHOWN ON DRAWING ARE FOR DETAILING PURPOSES ONLY AND SHOULD NOT BE USED FOR CONSTRUCTION UNLESS VERIFIED BY ENGINEER OR CONTRACTOR.

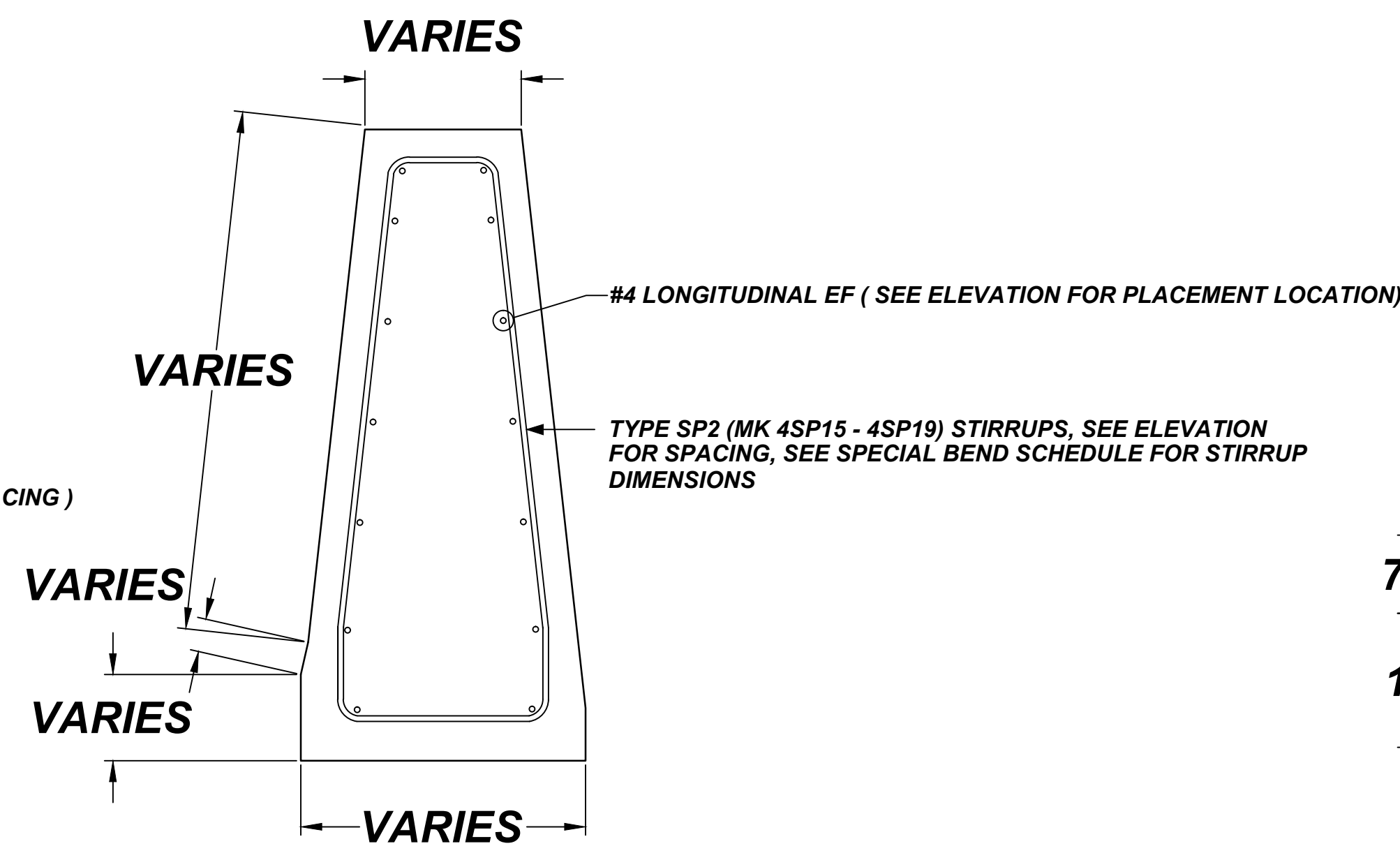
GFRP REINFORCEMENT					
SPICES USED		ABBREVIATIONS		BAR MARK SIZE EQUIVALENT	
N/A		ADD. = Additional		Imperial	Soft Metric
TOP BARS		B.O.W. = Bottom of wall		#3	#10
OTHER BARS		C.B. = Corner Bars		#4	#13
#3	#3	DIAG. = Diagonal		#5	#16
#4	#4	D.O. = Door Opening		#6	#19
#5	#5	DWLS. = Dowels		#7	#22
#6	#6	E.F. = Each Face		#8	#25
#7	#7	E.S. = Each Side		#9	#29
#8	#8	E.W. = Each Way		#10	#32
#9	#9	F.T.S. = Footing		#11	#36
#10	#10	F.F. = Far Face			
#11	#11	HORIZ. = Horizontal			
#12	#12	I.F. = Inside Face			
#13	#13	INTER. = Intersection			
#14	#14	L.W. = Long Way			
		N.F. = Near Face			
		O.F. = Outside Face			
		S.W. = Short Way			
		T&B = Top & Bottom			
		T.O.W. = Top of Wall			
		Trans. = Transverse			
		VERT. = Vertical			
2	07/25/13	RECORD			
1	07/19/13	APPROVAL			
0	07/16/13	APPROVAL			
REV No.	DATE	SENT FOR	REV No.	DATE	SENT FOR



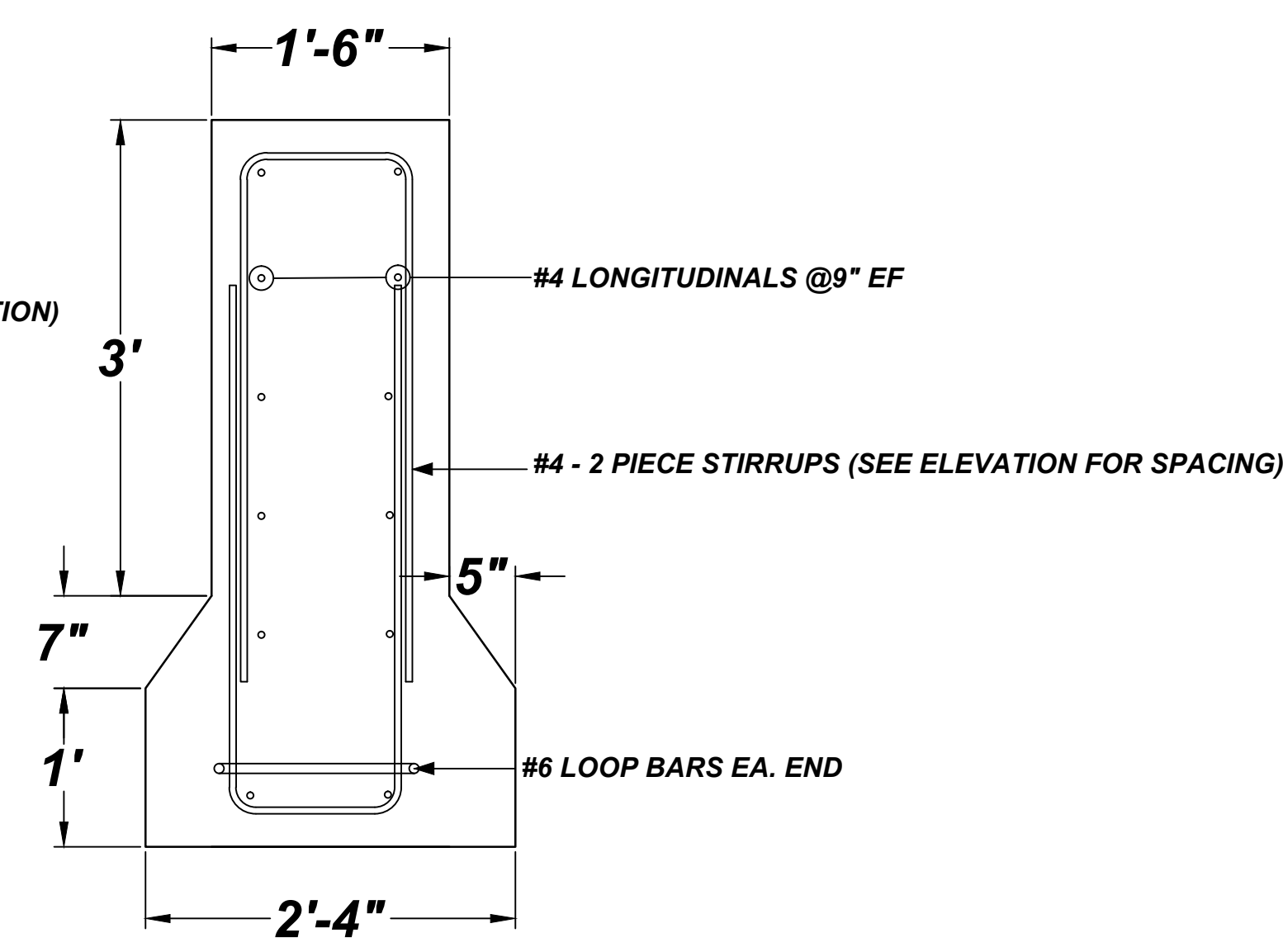
TYPE B TRANSITION BARRIER ELEVATION
1"=1'-0"



SECTION 1
1"=1'-0"



SECTION 4
1"=1'-0"



SECTION 5
1"=1'-0"

NOTICE
SHORTAGES, IMPROPER FABRICATION OR CLAIMS FOR ANY OTHER REASON MUST BE REPORTED TO THIS COMPANY WITHIN 10 DAYS FROM ORIGINAL DELIVERY. THIS COMPANY ALSO RESERVES THE RIGHT TO FIELD INSPECT MATERIALS PRIOR TO REPLACEMENT OR RECONDITIONING OF MATERIALS AND WILL NOT BE LIABLE FOR CHARGES FROM WORK DONE IN THE FIELD WITHOUT PRIOR AUTHORIZATION FROM THIS COMPANY.

REINFORCING STEEL PLACING DRAWING ONLY. USE IN CONJUNCTION WITH CONTRACT DRAWINGS & SPECIFICATIONS. ELEVATIONS & DIMENSIONS SHOWN ON DRAWING ARE FOR DETAILING PURPOSES ONLY AND SHOULD NOT BE USED FOR CONSTRUCTION UNLESS VERIFIED BY ENGINEER OR CONTRACTOR.

GFRP REINFORCEMENT					
SPICES USED		ABBREVIATIONS		BAR MARK SIZE EQUIVALENT	
N/A		ADD. = Additional		Imperial	Soft Metric
TOP BARS		B.O.W. = Bottom of wall		#3	#10
OTHER BARS		C.B. = Corner Bars		#4	#13
#3	#3	DIAG. = Diagonal		#5	#16
#4	#4	D.O. = Door Opening		#6	#19
#5	#5	DWLS. = Dowels		#7	#22
#6	#6 30	E.F. = Each Face		#8	#25
#7	#7	E.S. = Each Side		#9	#29
#8	#8	E.W. = Each Way		#10	#32
#9	#9	F.T.S. = Footing		#11	#36
#10	#10	F.F. = Far Face			
#11	#11	HORIZ. = Horizontal			
#14	#14	I.F. = Inside Face			
		INTERSE. = Intersection			
		L.W. = Long Way			
		N.F. = Near Face			
		O.F. = Outside Face			
		S.W. = Short Way			
		T&B = Top & Bottom			
		T.O.W. = Top of Wall			
		Trans. = Transverse			
		VERT. = Vertical			
2	07/25/13	RECORD			
1	07/19/13	APPROVAL			
0	07/16/13	APPROVAL			
REV No.	DATE	SENT FOR	REV No.	DATE	SENT FOR

HARMAC

A Division of A.H. Harris & Sons, Inc.
Formerly MacFarlane Steel

P.O. Box 142
Cornshop Road
Fryeburg, ME 04037

301 Hartle Street
Sayreville, NJ 03301

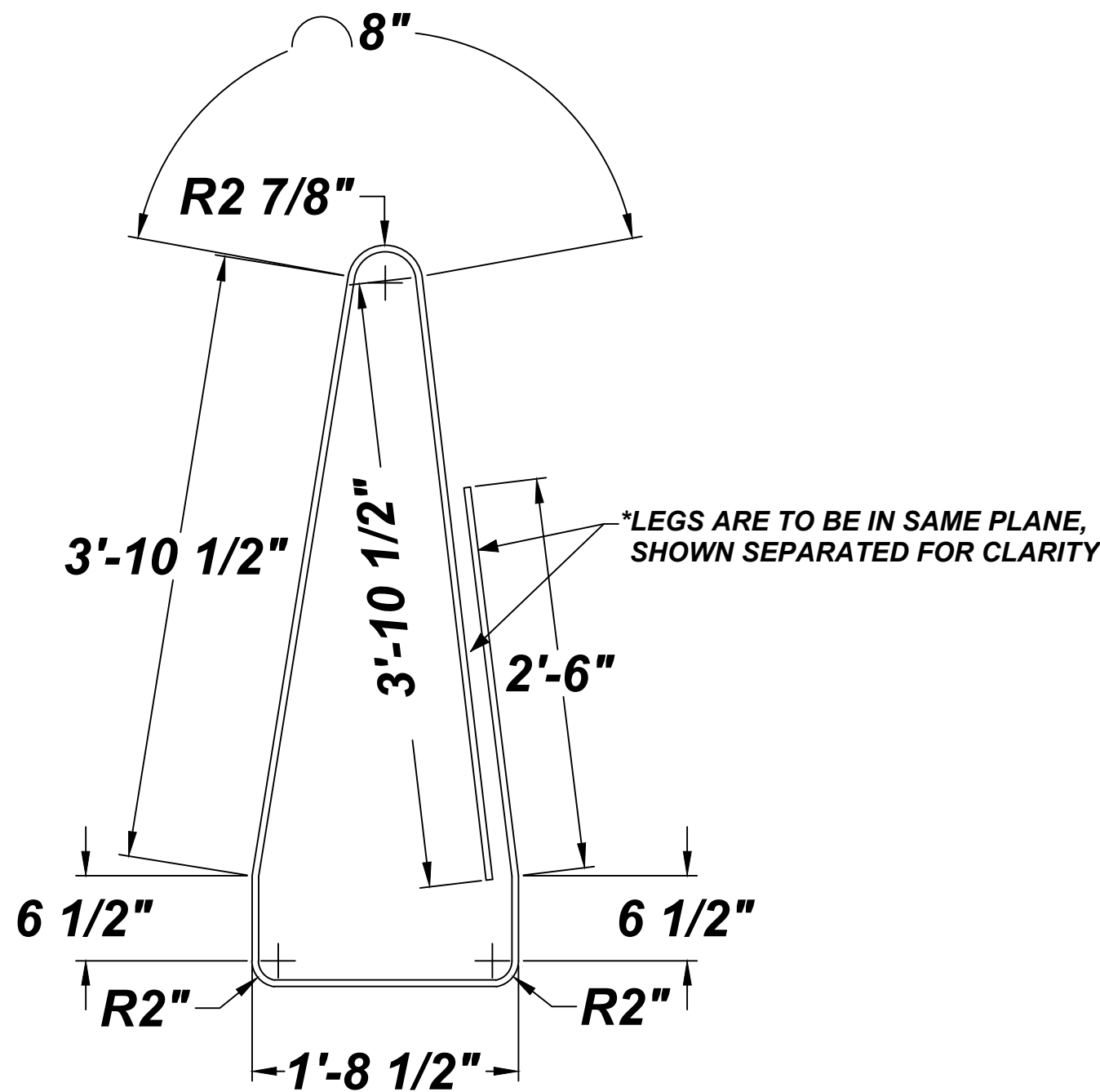
Tel. 800-294-4702
Fax 207-935-3058

I-95 CONCRETE BARRIER
PRECAST TRANSITION BARRIERS TYPE B
BANGOR, MAINE

CUSTOMER: SARGENT MATERIALS

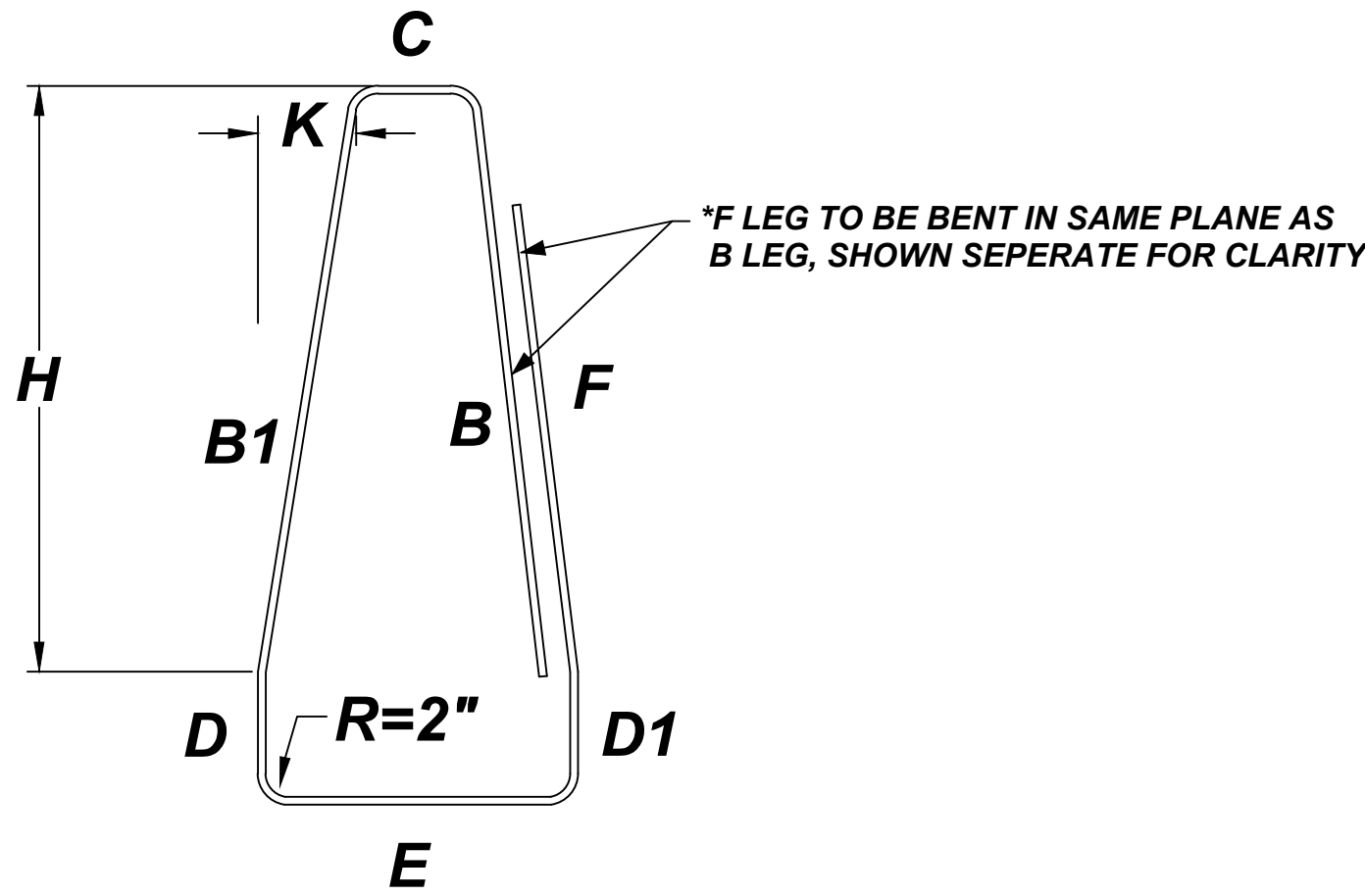
DESIGNER:

DRAWN BY	DATE	JOB NO	SHEET NO.
N.R.M.	07.11.13	M913N340	R-1C



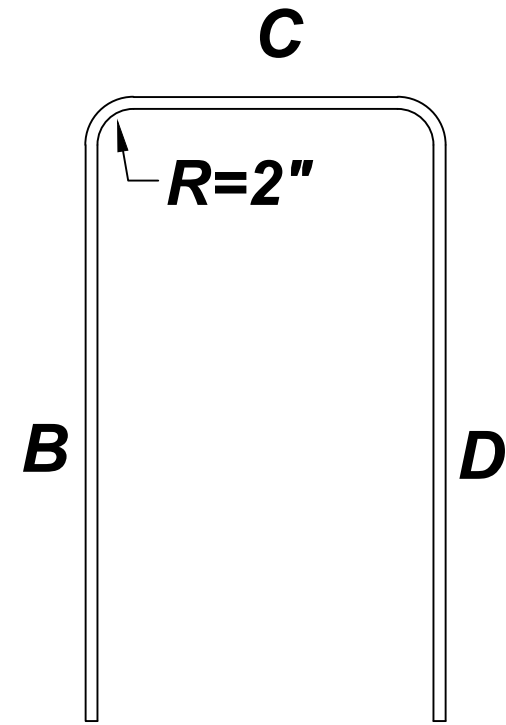
BEND DETAIL MK 4SP2

1"=1'-0"



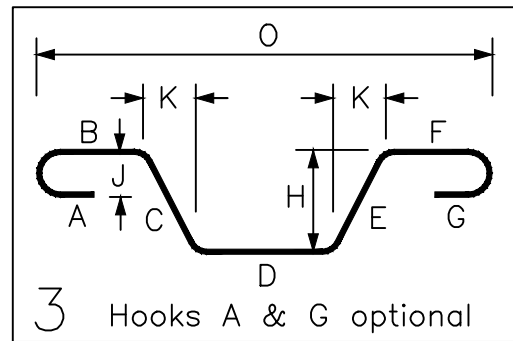
BEND TYPE SP2 (TYPICAL MK'S 4SP3 -4SP8, 4SP15 - 4SP19)

1"=1'-0"



TYPE 17

1"=1'-0"



SPECIAL BEND SCHEDULE (TYPE A TRANSITION BARRIER)													
BAR MARK	QUANTITY 1 ASSEMBLY	SIZE	TOTAL LENGTH	TYPE	B	B1	C	D	D1	E	F	H	K
4SP3	2	#4	13'-8 3/4"	SP2	3'-11"	3'-11"	7 1/4"	6 1/2"	6 1/2"	1'-8 1/2"	2'-6"	3'-10 1/2"	6 5/8"
4SP4	2	#4	13'-1 1/4"	SP2	3'-7 1/4"	3'-7 1/4"	8-3/4"	6 1/2"	6 1/2"	1'-7"	2'-6"	3'-7"	5 1/8"
4SP5	2	#4	12'-8 1/2"	SP2	3'-4 3/4"	3'-4 3/4"	9 1/2"	6 1/2"	6 1/2"	1'-6 1/2"	2'-6"	3'-4 1/2"	4 1/2"
4SP6	2	#4	12'-1"	SP2	3'-1"	3'-1"	11"	6 1/2"	6 1/2"	1'-5"	2'-6"	3'-1"	3"
4SP7	2	#4	11'-8"	SP2	2'-10"	2'-10"	1'-0 1/2"	6 1/2"	6 1/2"	1'-4 1/2"	2'-6"	2'-10"	2"
4SP8	2	#4	11'-1 1/2"	SP2	2'-6 1/2"	2'-6 1/2"	1'-2"	6 1/2"	6 1/2"	1'-3 1/2"	2'-6"	2'-6 1/2"	3/4"

SPECIAL BEND SCHEDULE (TYPE B TRANSITION BARRIER)													
BAR MARK	QUANTITY	SIZE	TOTAL LENGTH	TYPE	B	B1	C	D	D1	E	F	H	K
4SP15		#4	13'-11 1/2"	SP2	4'-1"	4'-1"	6 1/2"	6 1/2"	6 1/2"	1'-8"	2'-6"	4'- 0 1/2"	6 3/4"
4SP16		#4	13'-8 1/4"	SP2	3'-10 1/4"	3'-10 1/4"	7 3/4"	6 1/2"	6 1/2"	1'-7"	2'-6"	3'-10 7/8"	5 5/8"
4SP17		#4	13'-5"	SP2	3'-10"	3'-10"	8 1/2"	6 1/2"	6 1/2"	1'-5 1/2"	2'-6"	3'-9 1/2"	4 1/2"
4SP18		#4	13'-1"	SP2	3'-7 1/2"	3'-7 1/2"	10"	6 1/2"	6 1/2"	1'-5"	2'-6"	3'-7 1/2"	3 1/2"
4SP19		#4	12'-8"	SP2	3'-6"	3'-6"	11"	6 1/2"	6 1/2"	1'-2"	2'-6"	3'-6"	1 1/2"

Release Number: TRANSITION A					BAR LIST											
Bar Mark	Qty	Size	Total Length	Type	'A'	'B'	'C'	'D'	'E'	'F'	'G'	'H'	'J'	'K'	'O'	'R'
4A1	16	#4	7'-1 1/2"	17		2'-11"	1'-3 1/2"	2'-11"								
4A2	2	#4	6'-0 1/2"	3		3'-6 3/4"	2'-5 3/4"					0'-4 1/2"		2'-5 3/4"	6'-0 1/2"	
4A3	2	#4	6'-0 3/4"	3		3'-7"	2'-5 3/4"					0'-4 1/2"		2'-5 3/4"	6'-0 3/4"	
4A7	1	#4	11'-11 1/2"	3		8'-6"	3'-5 3/4"					0'-5 3/4"		3'-5 3/4"	11'-11 1/2"	
6A2	1	#6	8'-4 1/2"	17		3'-3"	1'-10 1/2"	3'-3"								
6A3	1	#6	7'-11 1/2"	17		3'-3"	1'-5 1/2"	3'-3"								

Release Number: TRANSITION B				BAR LIST												
Bar Mark	Qty	Size	Total Length	Type	'A'	'B'	'C'	'D'	'E'	'F'	'G'	'H'	'J'	'K'	'O'	'R'
4A4	16	#4	7'-9"	17		3'-4"	1'-1"	3'-4"								
4A5	2	#4	8'-11"	17		3'-11"	1'-1"	3'-11"								
4A6	4	#4	6'-0"	3		3'-6 1/2"	2'-5 1/2"					0'-2 1/2"		2'-5 1/2"	6'-0"	
4A8	2	#4	9'-1"	17		4'-0"	1'-1"	4'-0"								
6A2	1	#6	8'-4 1/2"	17		3'-3"	1'-10 1/2"	3'-3"								
6A3	1	#6	7'-11 1/2"	17		3'-3"	1'-5 1/2"	3'-3"								

NOTICE

SHORTAGES, IMPROPER FABRICATION OR CLAIMS FOR ANY OTHER REASON MUST BE REPORTED TO THIS COMPANY WITHIN 10 DAYS FROM ORIGINAL DELIVERY. THIS COMPANY ALSO RESERVES THE RIGHT TO FIELD INSPECT MATERIALS PRIOR TO REPLACEMENT OR RECONDITIONING OF MATERIALS AND WILL NOT BE LIABLE FOR CHARGES FROM WORK DONE IN THE FIELD WITHOUT PRIOR AUTHORIZATION FROM THIS COMPANY.

REINFORCING STEEL PLACING DRAWING ONLY.USE IN CONJUNCTION WITH CONTRACT DRAWINGS & SPECIFICATIONS. ELEVATIONS & DIMENSIONS SHOWN ON DRAWING ARE FOR DETAILING PURPOSES ONLY AND SHOULD NOT BE USED FOR CONSTRUCTION UNLESS VERIFIED BY ENGINEER OR CONTRACTOR.

GFRP REINFORCMENT

SPLICES USED

N/A	
TOP BARS	OTHER BARS
#3	#3
#4	#4
#5	#5
#6	#6 30
#7	#7
#8	#8
#9	#9
#10	#10
#11	#11
#14	#14

ABBREVIATIONS

ADD. = Additional
B.O.W. = Bottom of wall
C.B. = Corner Bars
DIAG. = Diagonal
D.O. = Door Opening
DWLS. = Dowels
E.F. = Each Face
E.S. = Each Side
E.W. = Each Way
FTG. = Footing
F.F. = Far Face
HORIZ. = Horizontal
I.F. = Inside Face
INTERS= Intersection
L.W. = Long Way
N.F. = Near Face
O.F. = Outside Face
S.W. = Short Way
T&B = Top & Bottom
T.O.W. = Top of Wall
Trans. = Transverse
VERT. = Vertical

BAR MARK SIZE EQUIVALENT

Imperial	Soft Metric
#3	#10
#4	#13
#5	#16
#6	#19
#7	#22
#8	#25
#9	#29
#10	#32
#11	#36

HARMAC

A Division of A.H. Harris & Sons,Inc.
Formerly MacFarlane Steel

P.O. Box 142
Cornshop Road
Fryeburg, ME 04037

301 Hartle Street
Sayreville, NJ 03301

Tel. 800-294-4702
Fax 207-935-3058

I-95 CONCRETE BARRIER

PRECAST TRANSITION BARRIERS TYPE A & B BEND DETAILS

BANGOR,MAINE

CUSTOMER: SARGENT MATERIALS

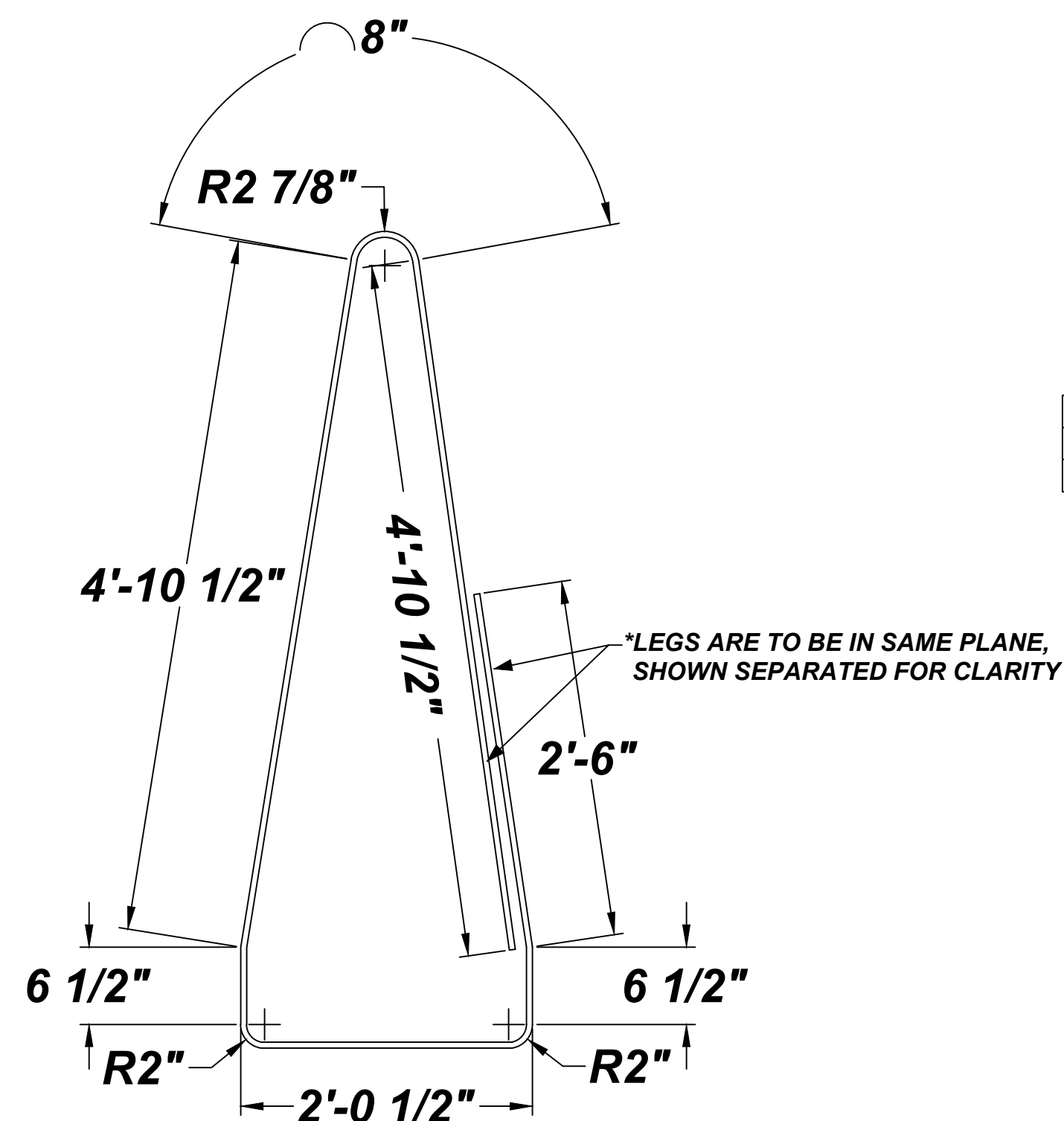
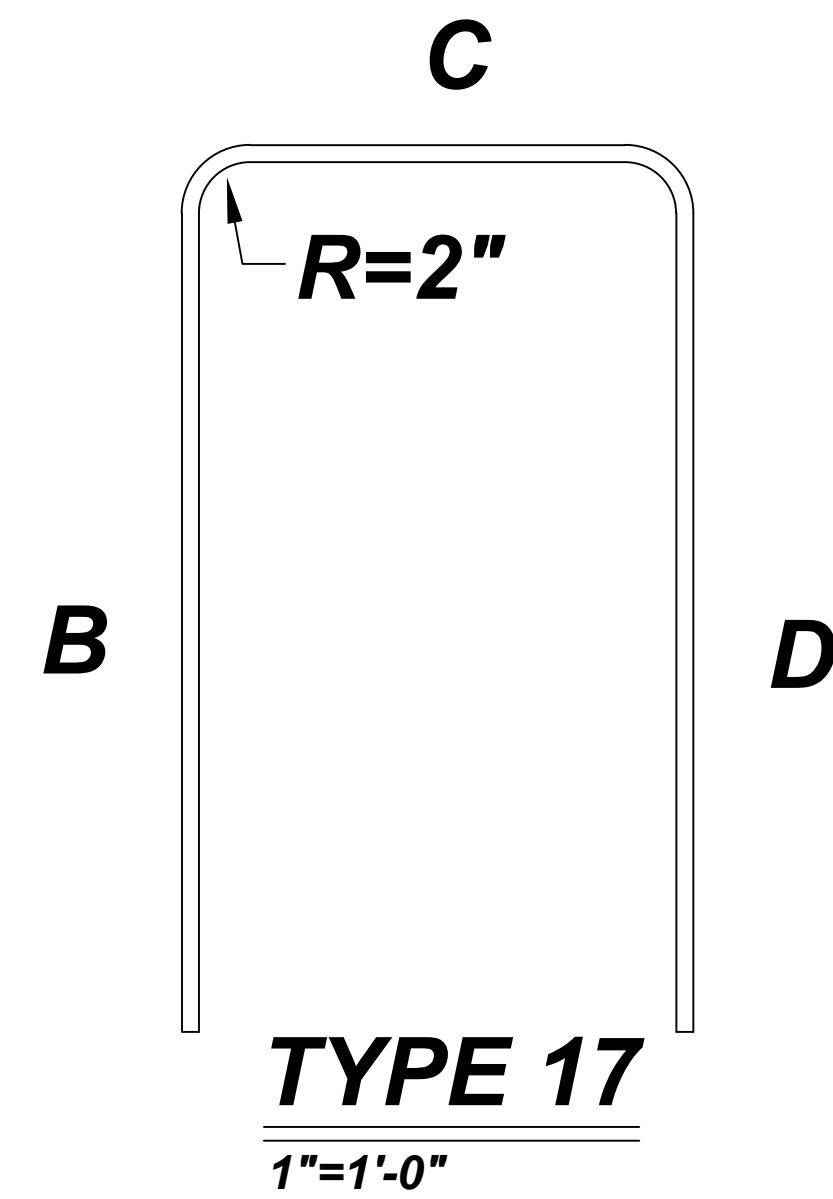
DESIGNER:

DRAWN BY	DATE	JOB NO	SHEET NO.
N.R.M.	07.11.13	M913N340	R-1D



1"=1'-0"

Release Number: KENDUSKEAG					BAR LIST											
Bar Mark	Qty	Size	Total Length	Type	'A'	'B'	'C'	'D'	'E'	'F'	'G'	'H'	'J'	'K'	'O'	'R'
5A1	10	#5	6'-3"	17		2'-7"	1'-1"	2'-7"								
5A2	5	#5	7'-11"	17		3'-5 1/2"	1'-0"	3'-5 1/2"								



Release Number: B+					BAR LIST											
Bar Mark	Qty	Size	Total Length	Type	'A'	'B'	'C'	'D'	'E'	'F'	'G'	'H'	'J'	'K'	'O'	'R'
6A4	2	#6	8'-8 3/4"	17		3'-3"	2'-2 3/4"	3'-3"								



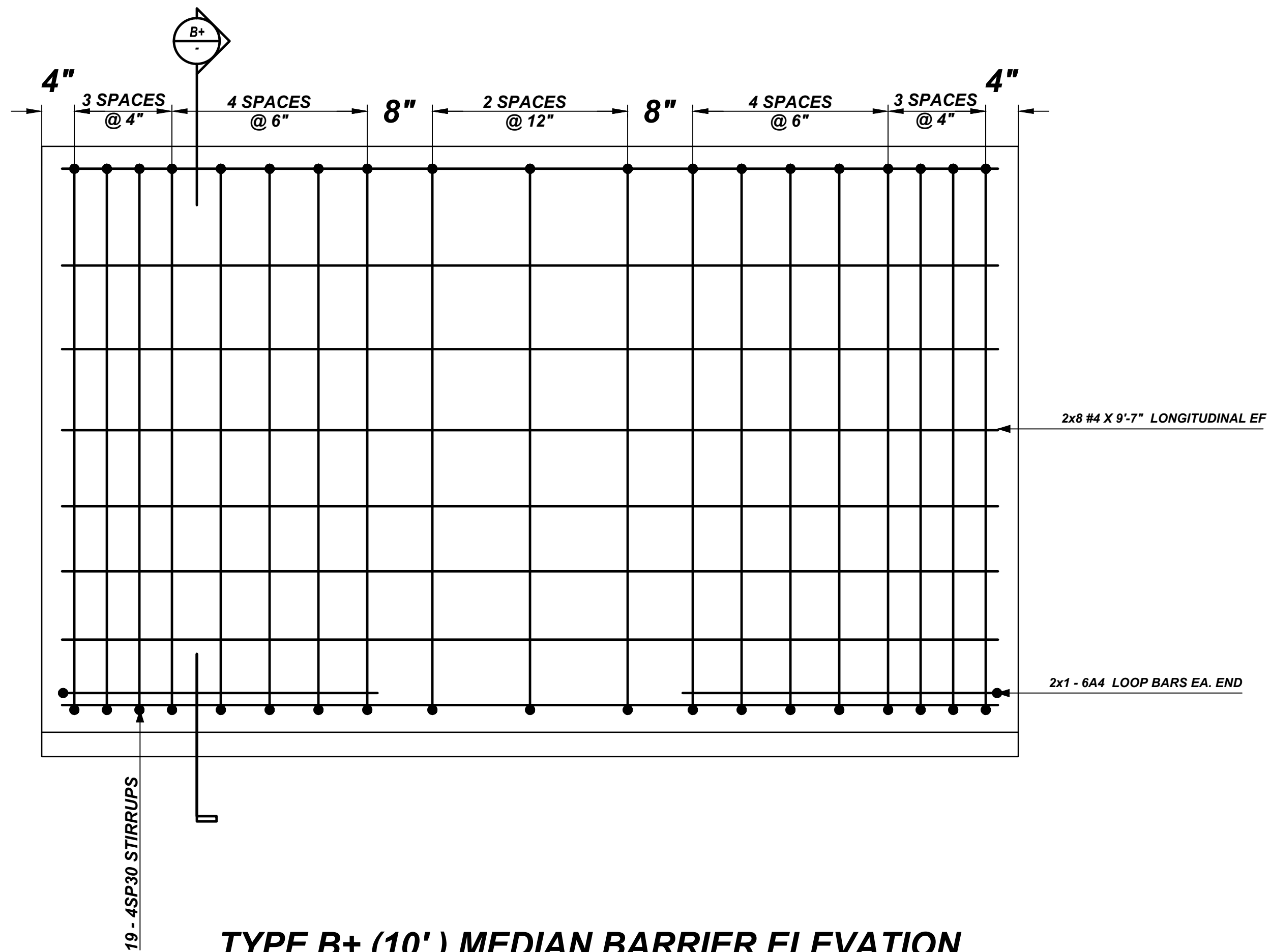
GFRP REINFORCEMENT			
SPLICES USED		ABBREVIATIONS	BAR MARK SIZE EQUIVALENT
N/A		ADD. = Additional B.O.W. = Bottom of wall C.B. = Corner Bars DIAG. = Diagonal D.O. = Door Opening DWLS. = Dowels E.F. = Each Face E.S. = Each Side E.W. = Each Way FTG. = Footing F.F. = Far Face HORIZ. = Horizontal I.F. = Inside Face INTERSE. = Intersection L.W. = Long Way N.F. = Near Face O.F. = Outside Face S.W. = Short Way T&B = Top & Bottom T.O.W. = Top of Wall Trans. = Transverse VERT. = Vertical	Imperial Soft Metric
TOP BARS	OTHER BARS		
#3	#3		#3 #10
#4	#4		#4 #13
#5	#5		#5 #16
#6	#6		#6 #19
#7	#7		#7 #22
#8	#8		#8 #25
#9	#9		#9 #29
#10	#10		#10 #32
#11	#11		#11 #36
#14	#14		
1	08/21/13	RECORD	
0	08/19/13	APPROVAL	
REV NO.	DATE	SENT FOR	REV NO. DATE SENT FOR

 <p style="text-align: center; margin-top: 5px;">A Division of A.H. Harris & Sons, Inc. Formerly <i>MacFarlane Steel</i></p>	
<p>P.O. Box 142 Cornshop Road Fryeburg, ME 04037</p>	<p>301 Hartle Street Sayreville, NJ 03301</p>
<p>Tel. 800-294-4702 Fax 207-935-3058</p>	

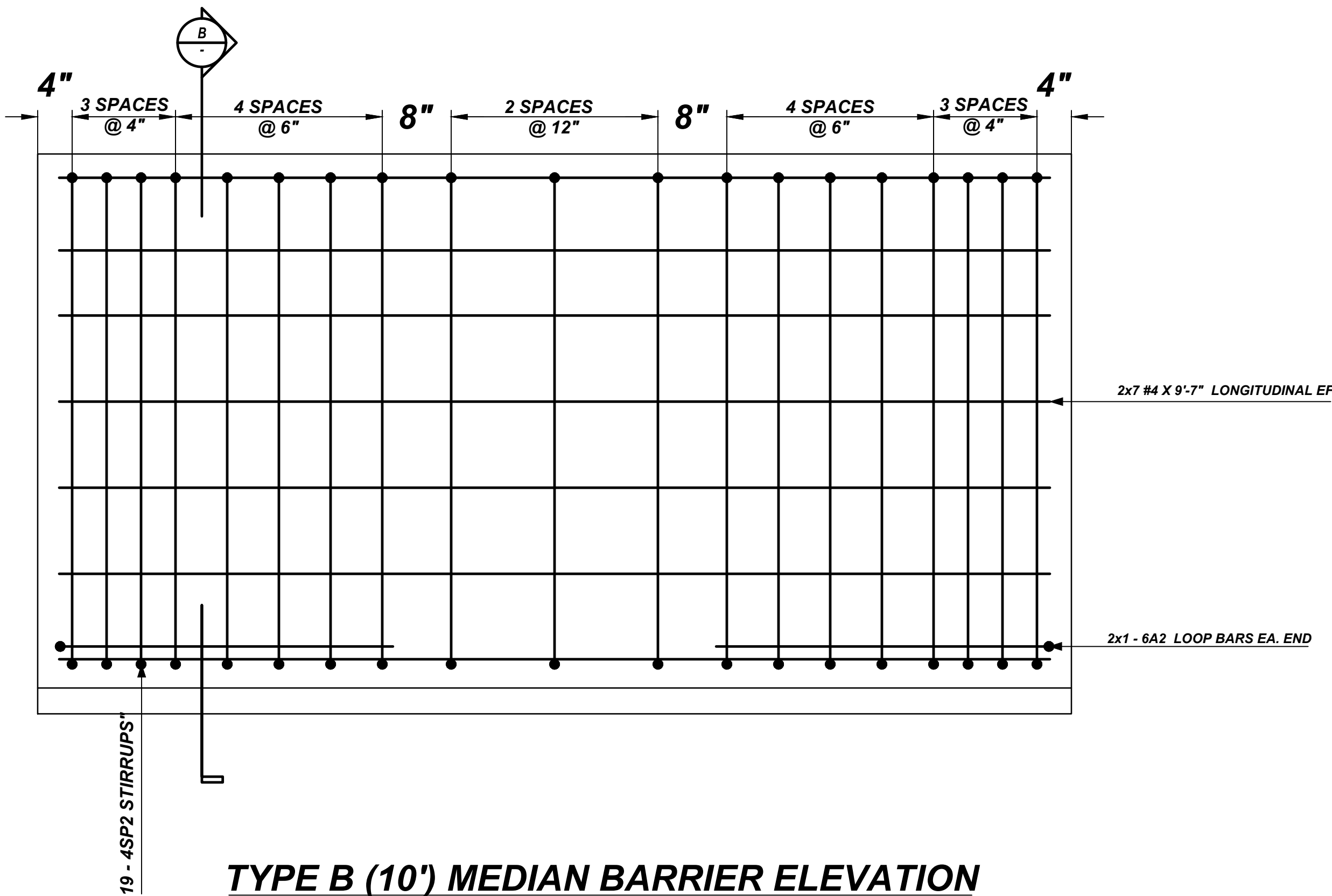
NOTICE

SHORTAGES, IMPROPER FABRICATION OR CLAIMS FOR ANY OTHER REASON MUST BE REPORTED TO THIS COMPANY WITHIN 10 DAYS FROM ORIGINAL DELIVERY. THIS COMPANY ALSO RESERVES THE RIGHT TO FIELD INSPECT MATERIALS PRIOR TO REPLACEMENT OR RECONDITIONING OF MATERIALS AND WILL NOT BE LIABLE FOR CHARGES FROM WORK DONE IN THE FIELD WITHOUT PRIOR AUTHORIZATION FROM THIS COMPANY.

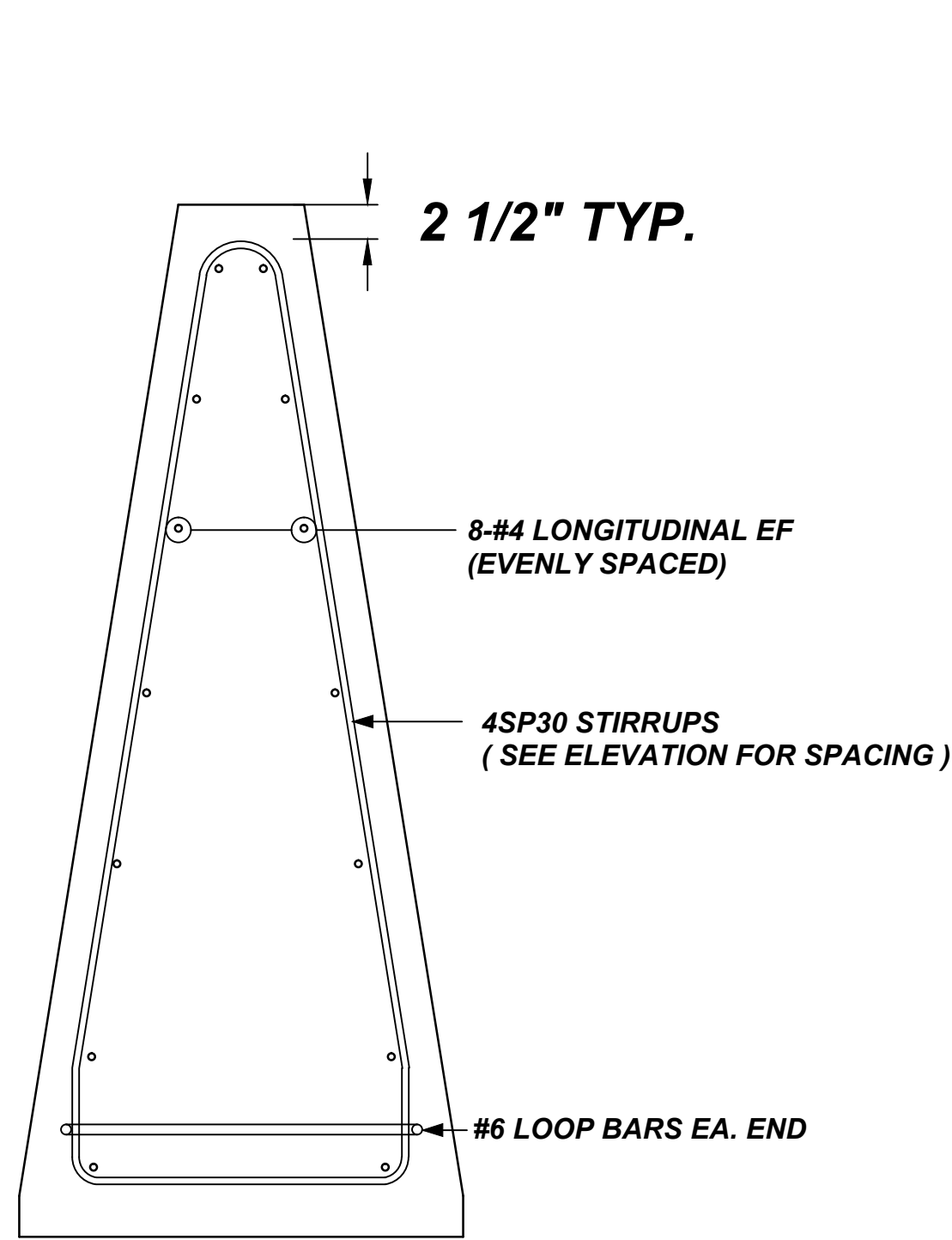
REINFORCING STEEL PLACING DRAWING ONLY. USE IN CONJUNCTION WITH CONTRACT DRAWINGS & SPECIFICATIONS. ELEVATIONS & DIMENSIONS SHOWN ON DRAWING ARE FOR DETAILING PURPOSES ONLY AND SHOULD NOT BE USED FOR CONSTRUCTION UNLESS VERIFIED BY ENGINEER OR CONTRACTOR.



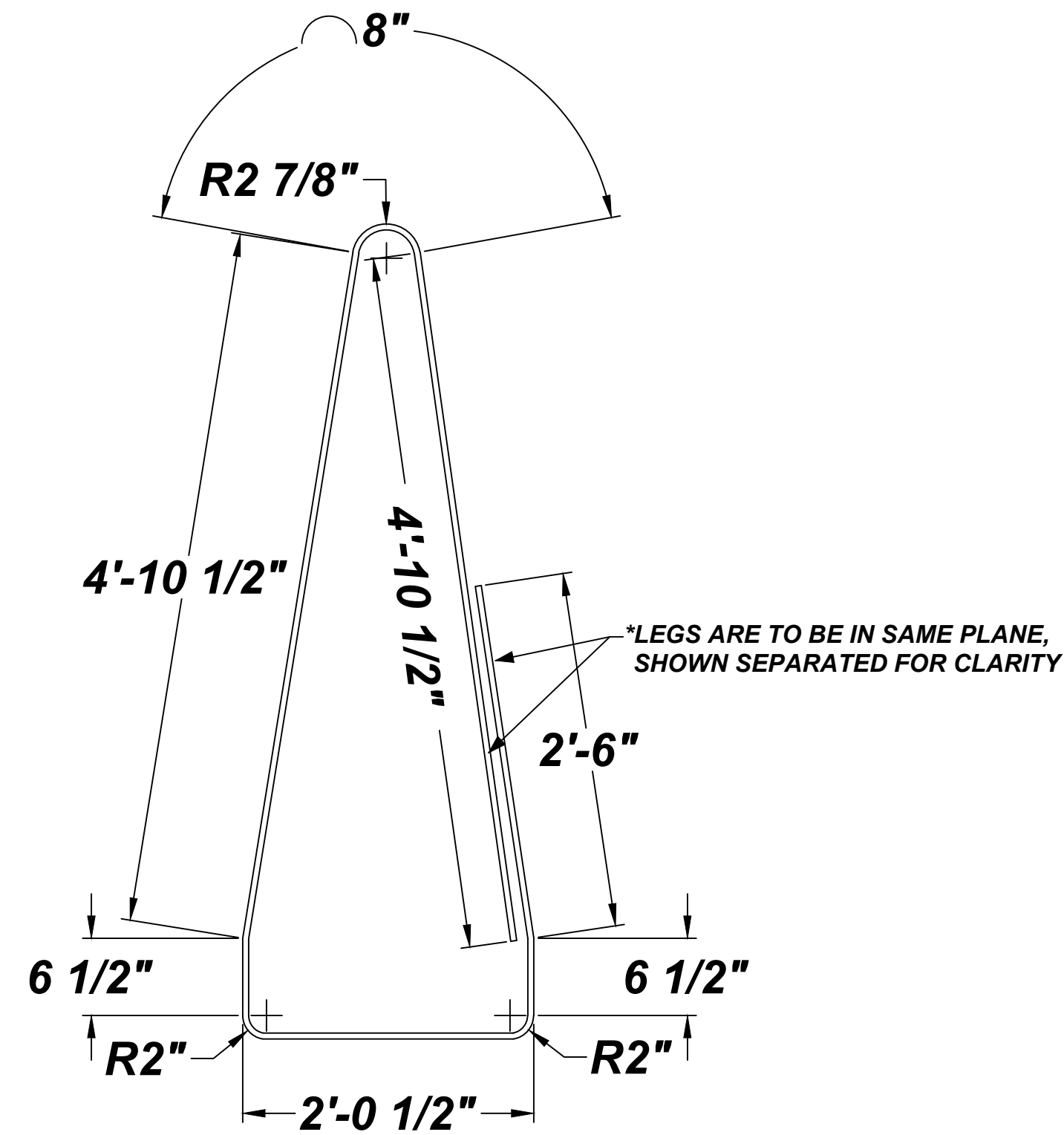
TYPE B+ (10') MEDIAN BARRIER ELEVATION
1"=1'-0"



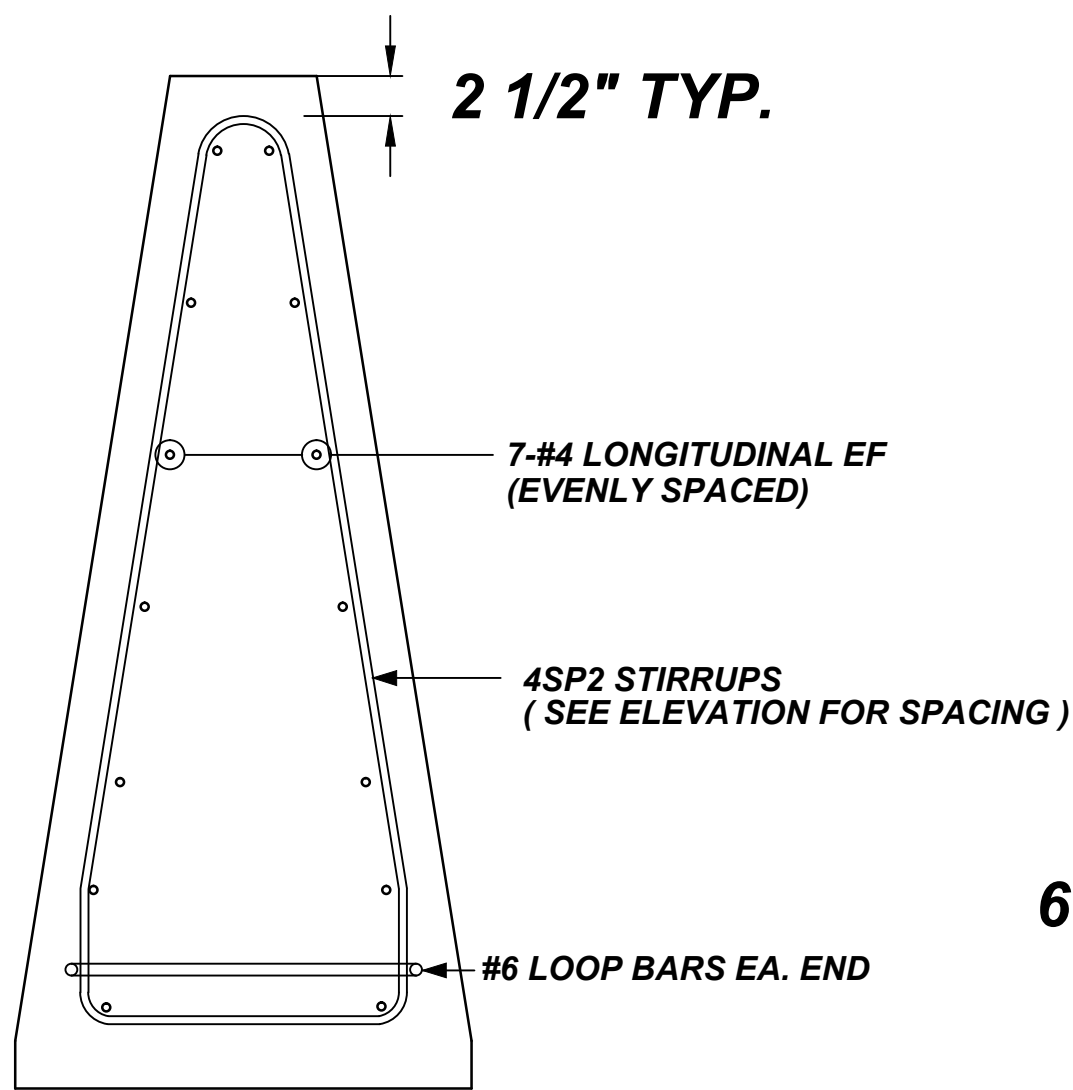
TYPE B (10') MEDIAN BARRIER ELEVATION
1"=1'-0"



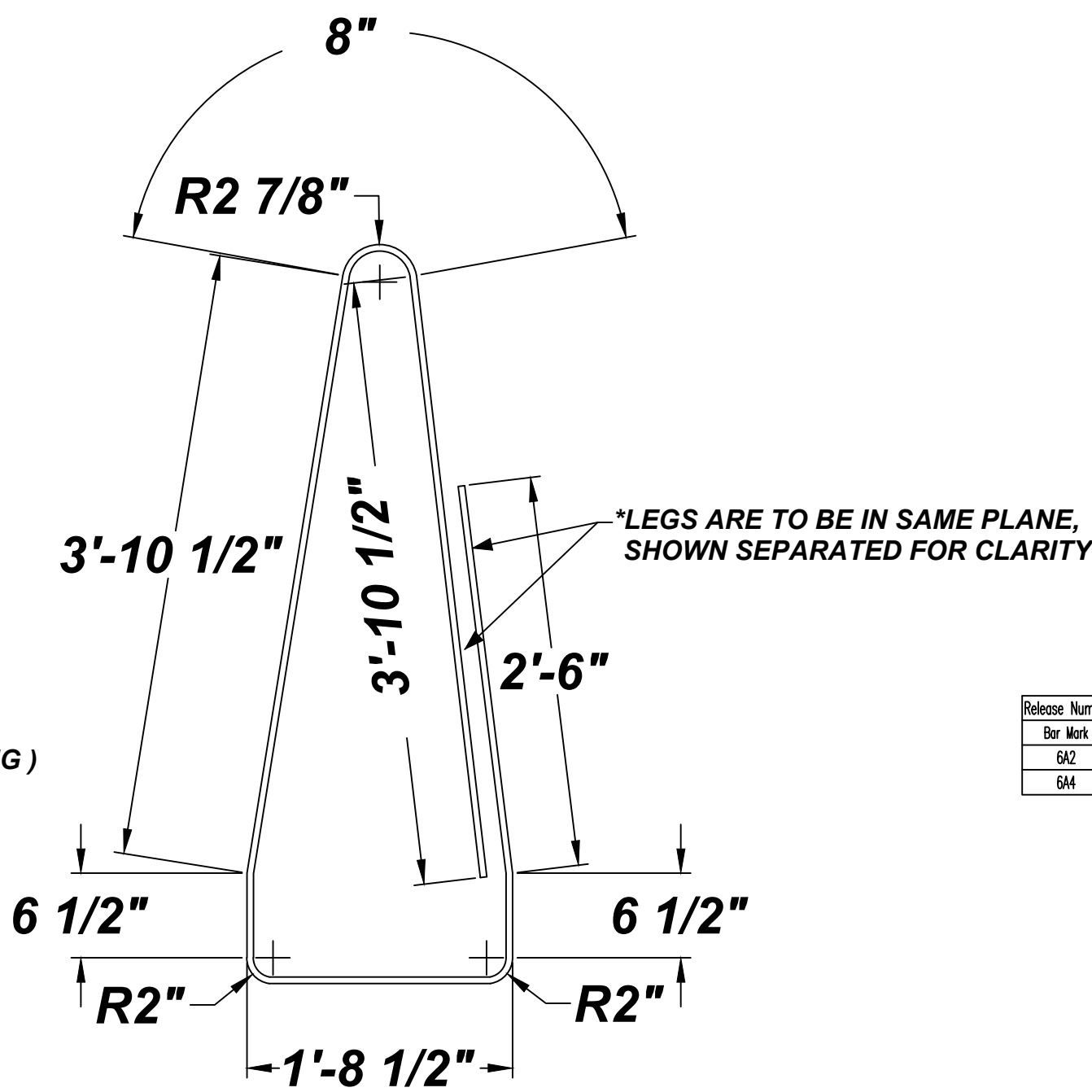
SECTION B+
1"=1'-0"



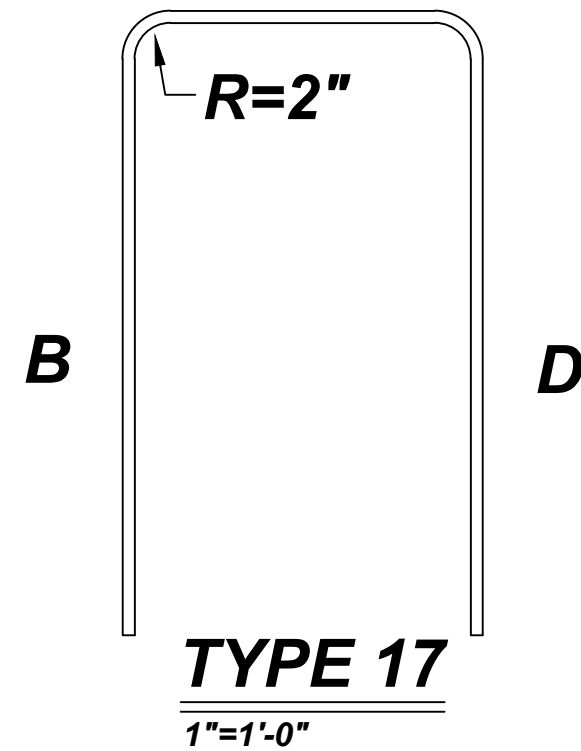
BEND DETAIL MK 4SP30
1"=1'-0"



SECTION B
1"=1'-0"



BEND DETAIL MK 4SP2
1"=1'-0"



TYPE 17
1"=1'-0"

Release Number: B B+ 10 F202										BAR LIST									
Bar Mark	Qty	Size	Total Length	Type	X	Y	Z	V	W	T	U	V	W	X	Y	Z	V	W	X
6A2	1	#6	8'-4.8"	17				3'-3"	1'-10.8"	3'-3"									
6A4	2	#6	8'-8.8"	17				3'-3"	2'-2.8"	3'-3"									

NOTICE
SHORTAGES, IMPROPER FABRICATION OR CLAIMS FOR ANY OTHER REASON MUST BE REPORTED TO THIS COMPANY WITHIN 10 DAYS FROM ORIGINAL DELIVERY. THIS COMPANY ALSO RESERVES THE RIGHT TO FIELD INSPECT MATERIALS PRIOR TO REPLACEMENT OR RECONDITIONING OF MATERIALS AND WILL NOT BE LIABLE FOR CHARGES FROM WORK DONE IN THE FIELD WITHOUT PRIOR AUTHORIZATION FROM THIS COMPANY.

REINFORCING STEEL PLACING DRAWING ONLY. USE IN CONJUNCTION WITH CONTRACT DRAWINGS & SPECIFICATIONS. ELEVATIONS & DIMENSIONS SHOWN ON DRAWING ARE FOR DETAILING PURPOSES ONLY AND SHOULD NOT BE USED FOR CONSTRUCTION UNLESS VERIFIED BY ENGINEER OR CONTRACTOR.

GFRP REINFORCEMENT										HARMAC REBAR AND STEEL CORPORATION																	
SPICES USED				ABBREVIATIONS				BAR MARK SIZE EQUIVALENT																			
N/A				ADD. = Additional B.O.W. = Bottom of wall C.B. = Corner Bars DIAG. = Diagonal D.O. = Door Opening DWLS. = Dowels E.F. = Each Face E.S. = Each Side E.W. = Each Way FTG. = Footing F.F. = Far Face HORIZ. = Horizontal I.F. = Inside Face INTER. = Intersection L.W. = long Way N.F. = Near Face O.F. = Outside Face S.W. = Short Way T&B = Top & Bottom T.O.W. = Top of Wall Trans. = Transverse VERT. = Vertical				Imperial		Soft Metric																	
TOP BARS		OTHER BARS		#3	#3	#4	#4	#5	#5	#6	#6	#7	#7	#8	#8	#9	#9	#10	#10	#11	#11	#12	#12	#13	#13	#14	#14
1				09.05.13				RECORD																			
0				08/19/13				APPROVAL																			
REV NO.				DATE				SENT FOR				REV NO.				DATE				SENT FOR							
																</											